

Academic Life



Academic & Administrative Buildings

Academic and administrative departments are consolidated and co-located with frequent collaborators. Learning environments are refreshed to support contemporary curricular and pedagogical goals outlined in *Building on Strength*, the academic strategic plan.

Fanning-Bill Social Sciences Connector

The social sciences are welcomed into the campus core in a new “connector” building linking Fanning Hall and Bill Hall. The new, fully accessible building offers faculty members offices adjacent to their teaching environments, fostering student-faculty interactions. Because of its connective nature, the building’s elevator serves to make the upper floors of Fanning Hall and Bill Hall accessible.

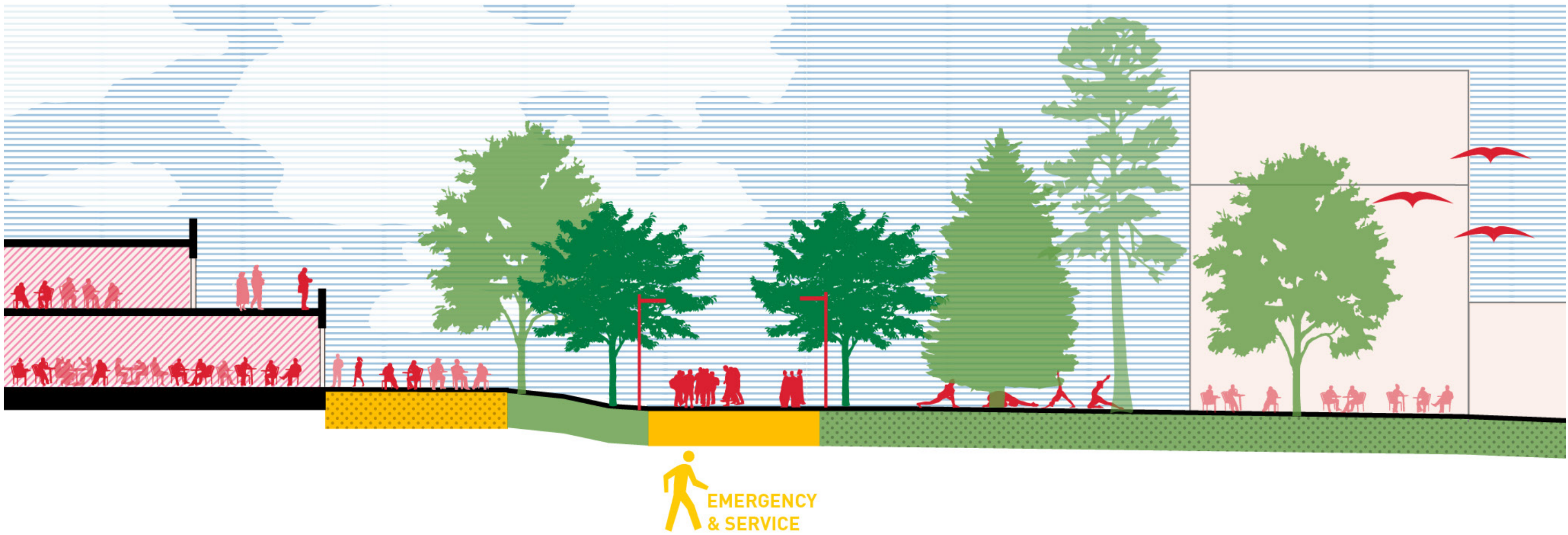
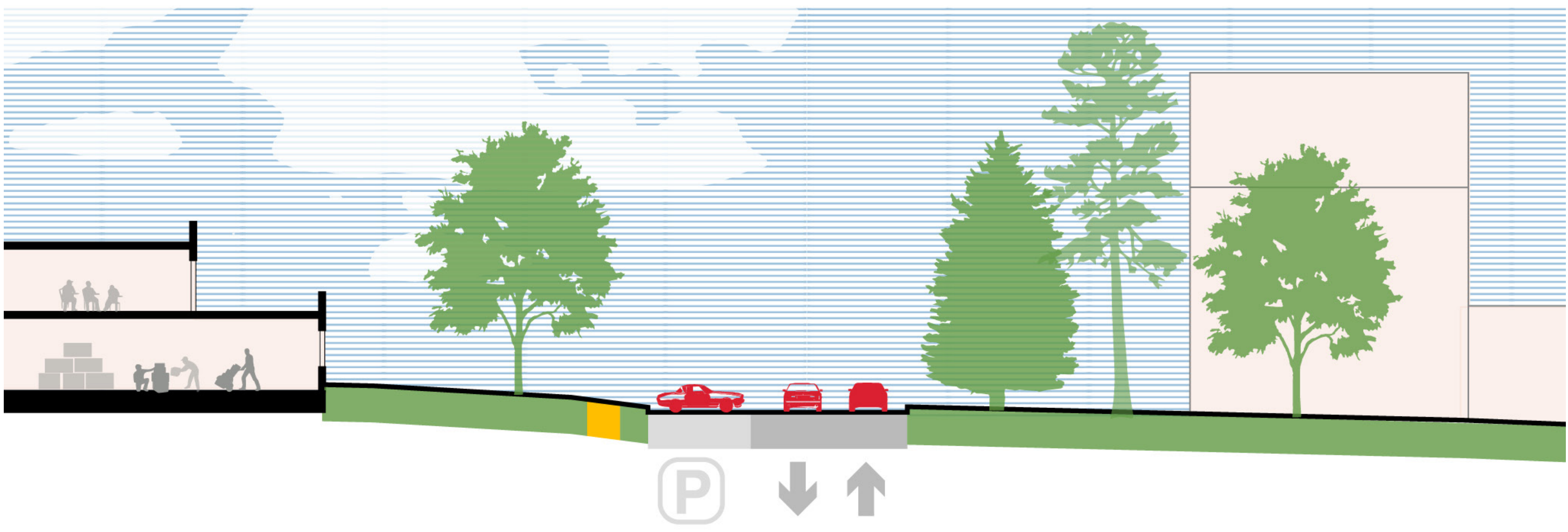


Student Life



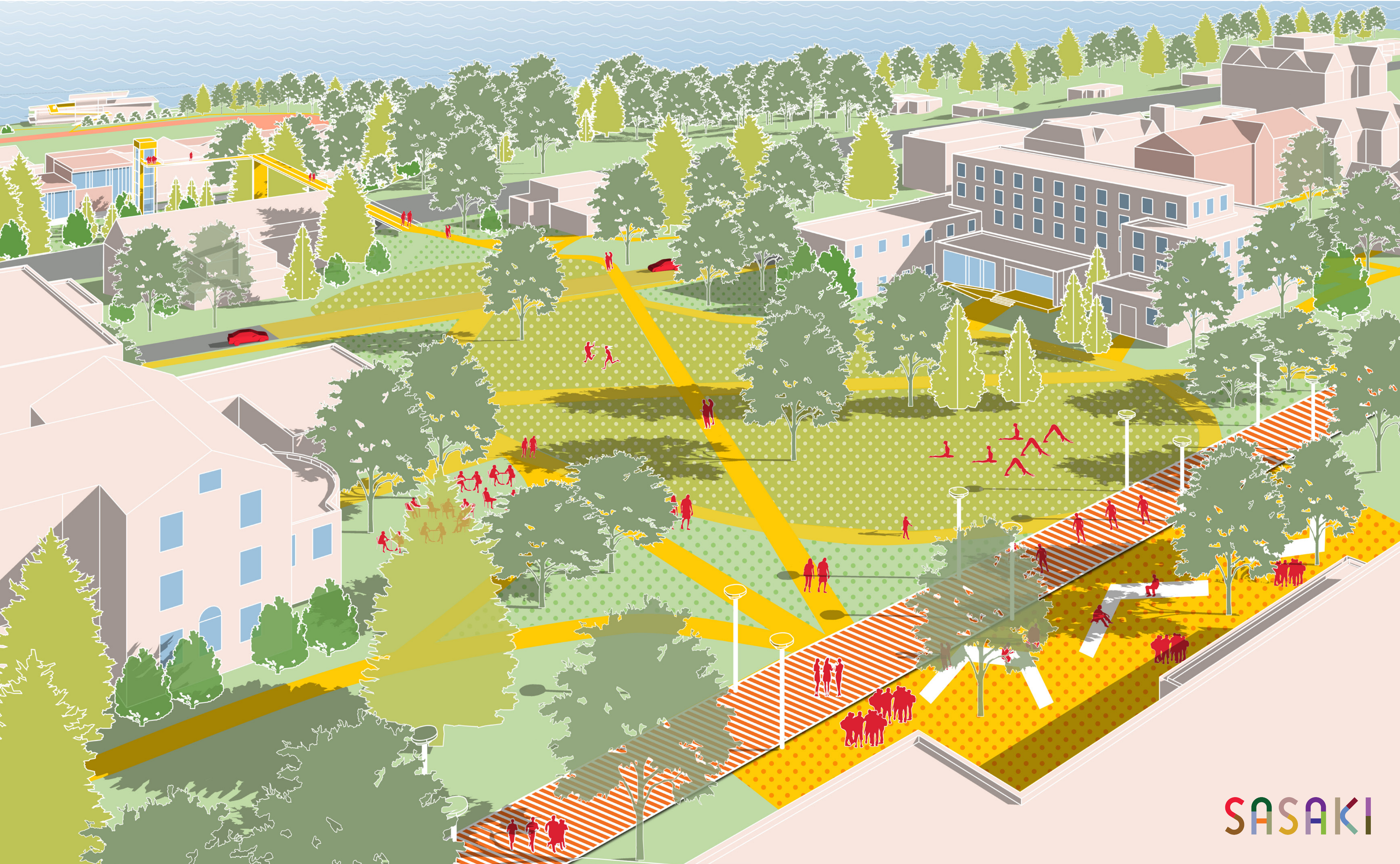
Cro Boulevard

Cro Boulevard is pedestrianized and improved with landscape amenities, reducing vehicular-pedestrian conflict zones and improving the overall quality of the pedestrian experience on campus. Closing Cro Boulevard to cars also enables the removal of the spur road in front of Smith-Burdick, reclaiming that space for people.



Larrabee Commons

Larrabee Commons is transformed as a dynamic student life district, framed by a refreshed Crozier Williams College Center, a new Affinity Groups Center in Smith-Burdick, and indoor-outdoor connections to student life spaces in KB and Larrabee Houses. The Commons activates the connection to East Campus, and leverages views of the Thames River.



Camel Sports

Connecticut College
Master Plan 2018



Athletic & Recreational Facilities

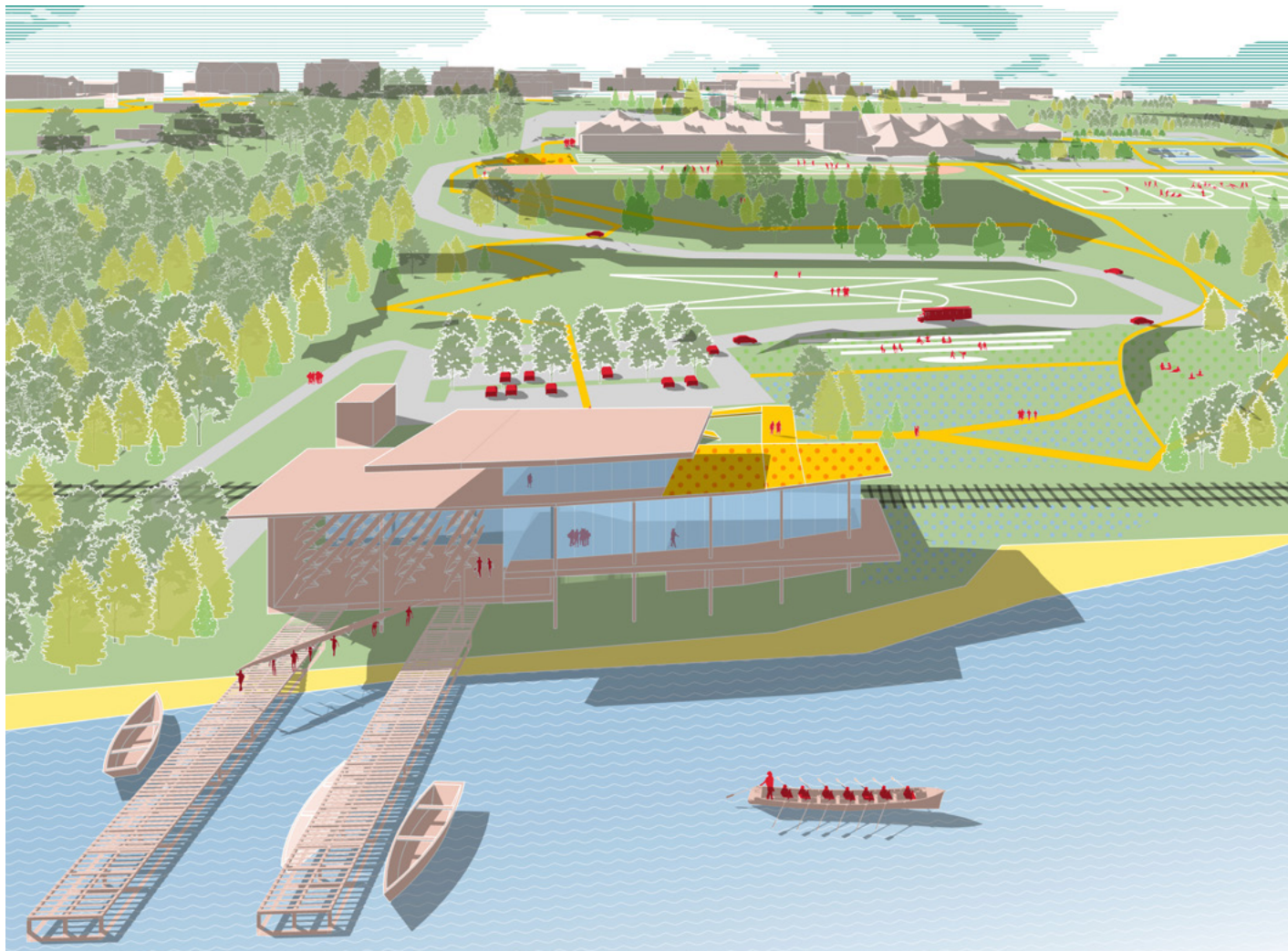
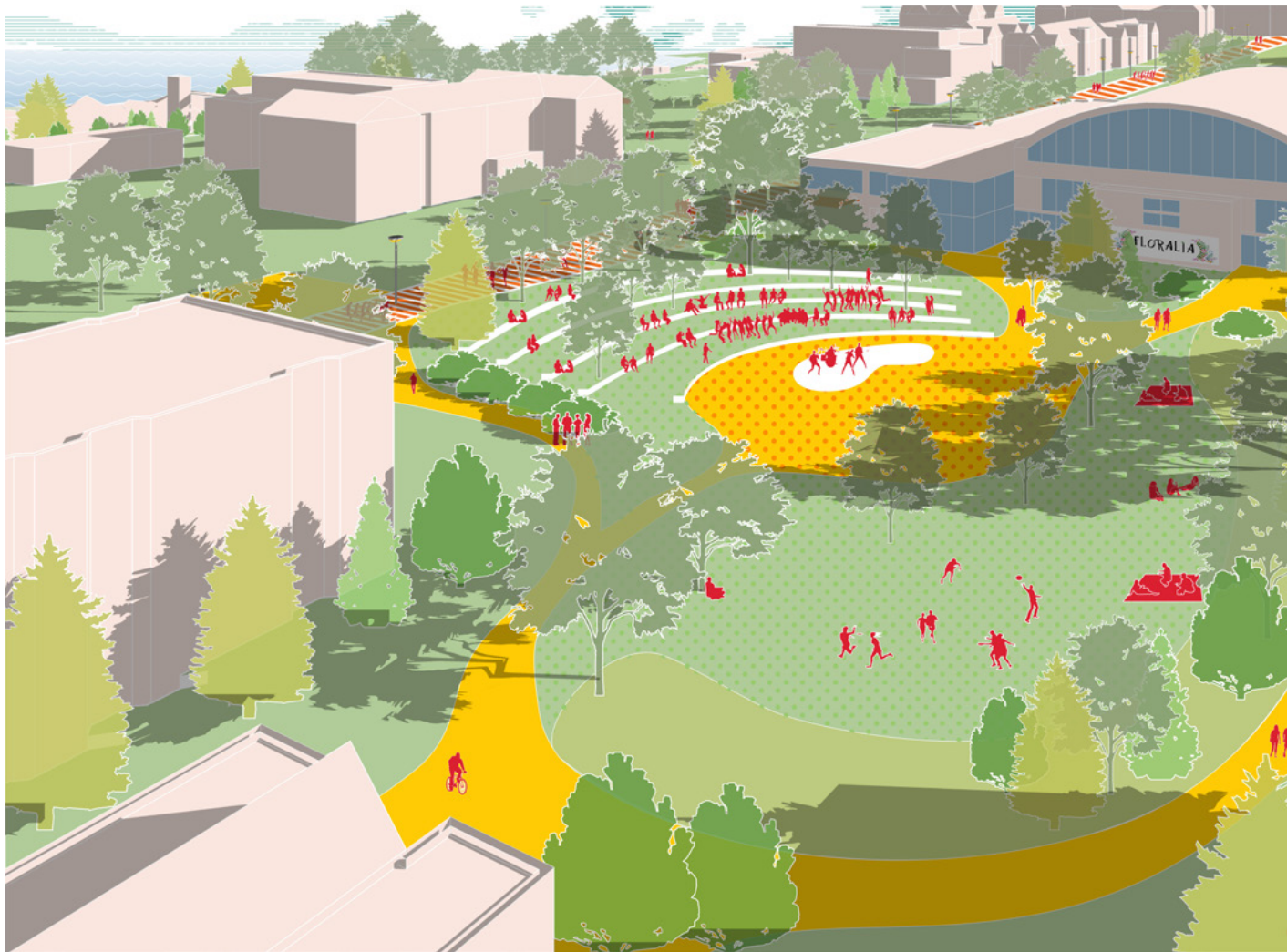
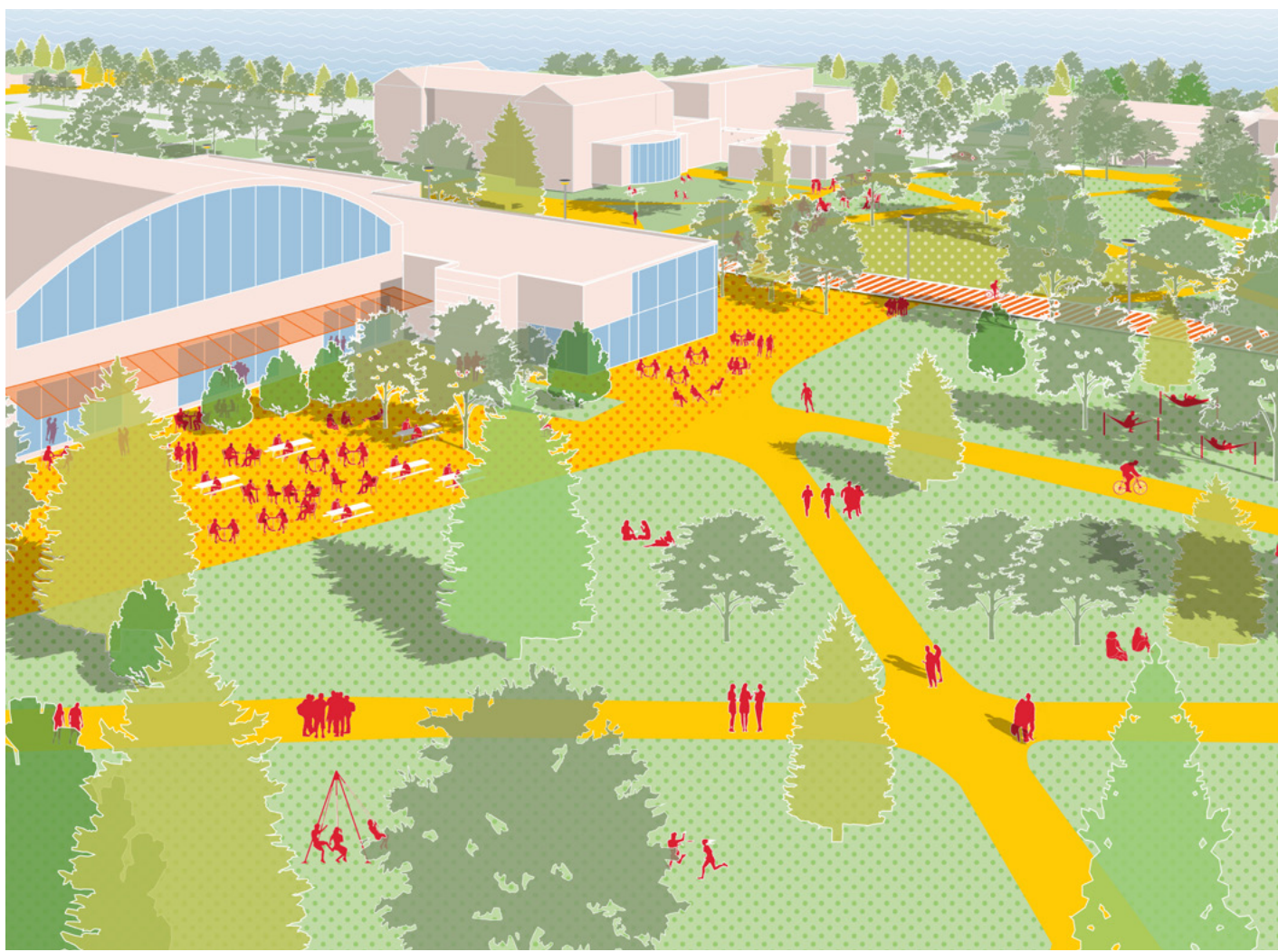
Athletics and recreation offerings are upgraded across campus in order to better support recreators, athletes, and spectators. On the core campus, a new grass field below Tempel Green offers level recreation space, and tennis is enhanced with additional courts, a comfort station, and spectator seating. East of Route 32, a new turf field provides flexibility for athletics competitions, a new boathouse makes the most of Conn's waterfront, and renovations to existing buildings improve competition and support spaces.

East Campus Gateway

Access to the campus precinct east of Route 32 is significantly improved with an enhanced pedestrian bridge, replete with an elevator, and a new gateway building that clarifies pedestrian flows in and around the venues.



Landscape



Sustainability

Sustainable solutions are integrated across campus. Strategies range from the active, such as renewable power generation, and the passive, such as building designs that take advantage of natural light and passive heating and cooling, and landscapes that require little irrigation and maintenance.



Landscape Framework

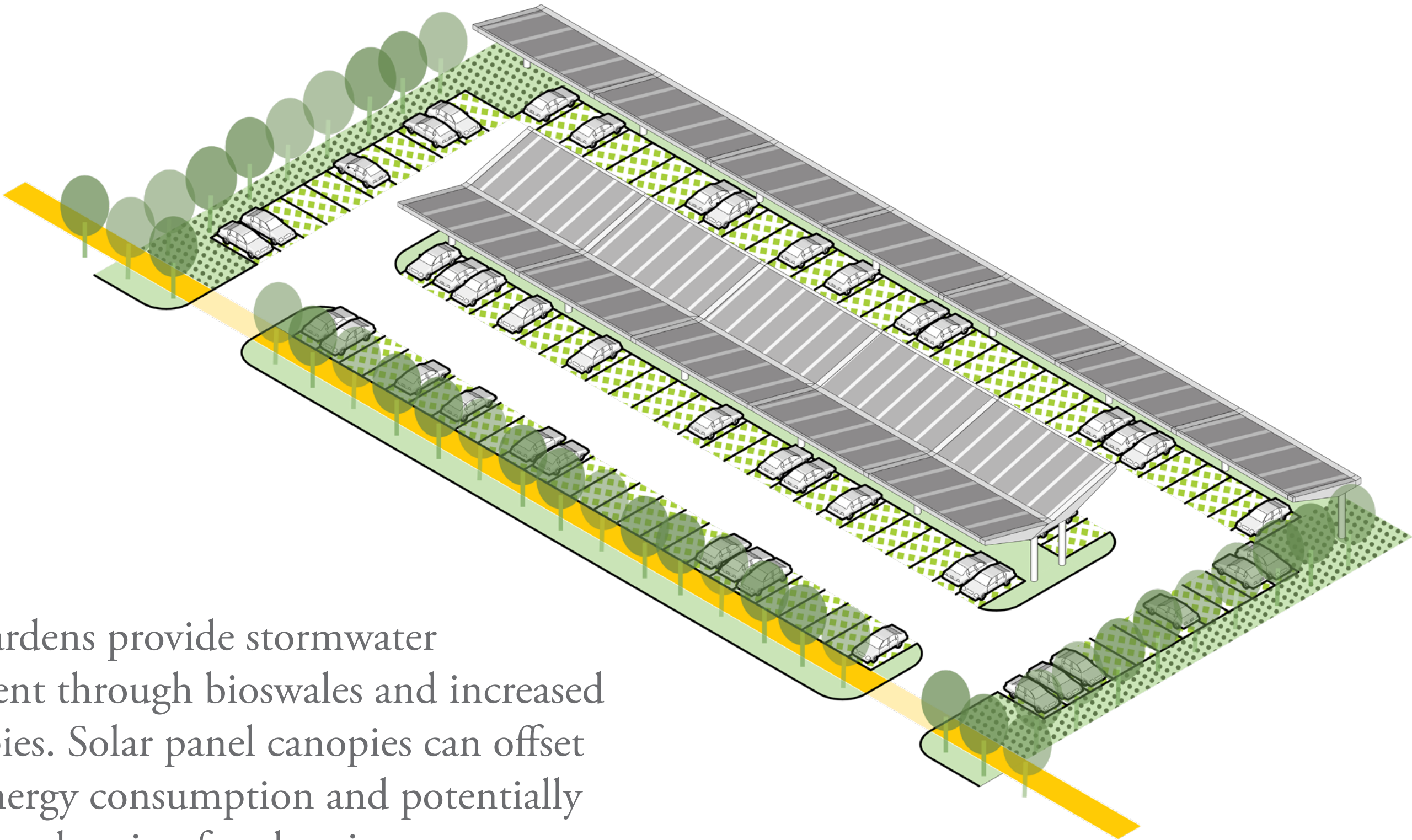
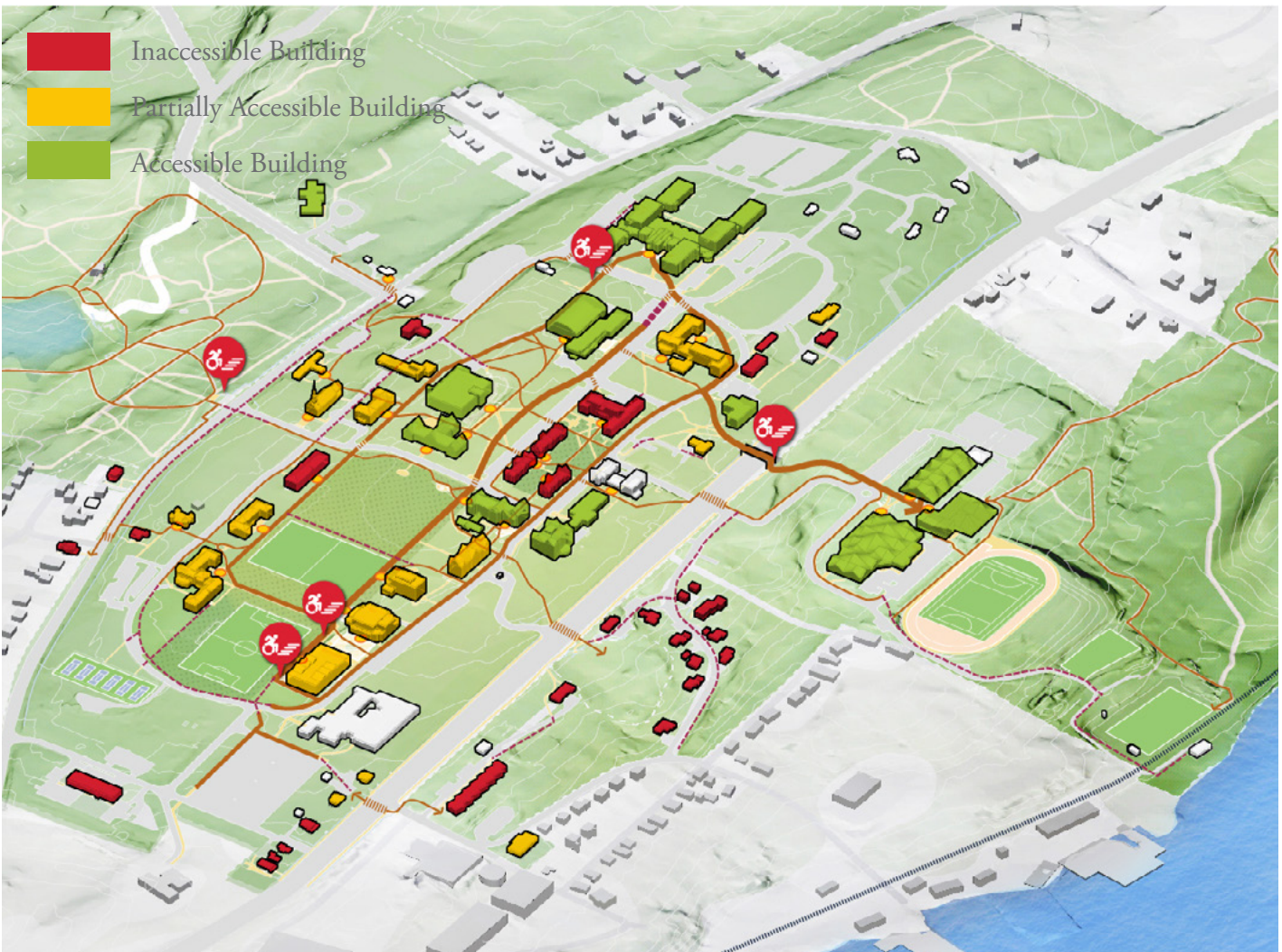
The landscape framework leverages Connecticut College's arboretum setting through extension of the Arbo character across Williams Street, creates dynamic spaces for community in the Yard and on Tempel Green, and improves access to the water in the Park.



Mobility

Vehicular Circulation

Vehicular circulation is moved from the campus core to a new loop road, clarifying the vehicular mobility patterns for visitors and the campus community while promoting a pedestrian-friendly campus core. Parking is located around the exterior of the loop road to provide convenient access to campus buildings.



Parking gardens provide stormwater management through bioswales and increased tree canopies. Solar panel canopies can offset campus energy consumption and potentially provide free charging for electric cars.



Accessibility

The number of accessible buildings on campus increases substantially after full build-out of the plan, including many key high-traffic buildings.

