

# JOHN CARROLL UNIVERSITY

April 11-12, 2007



S A S A K I

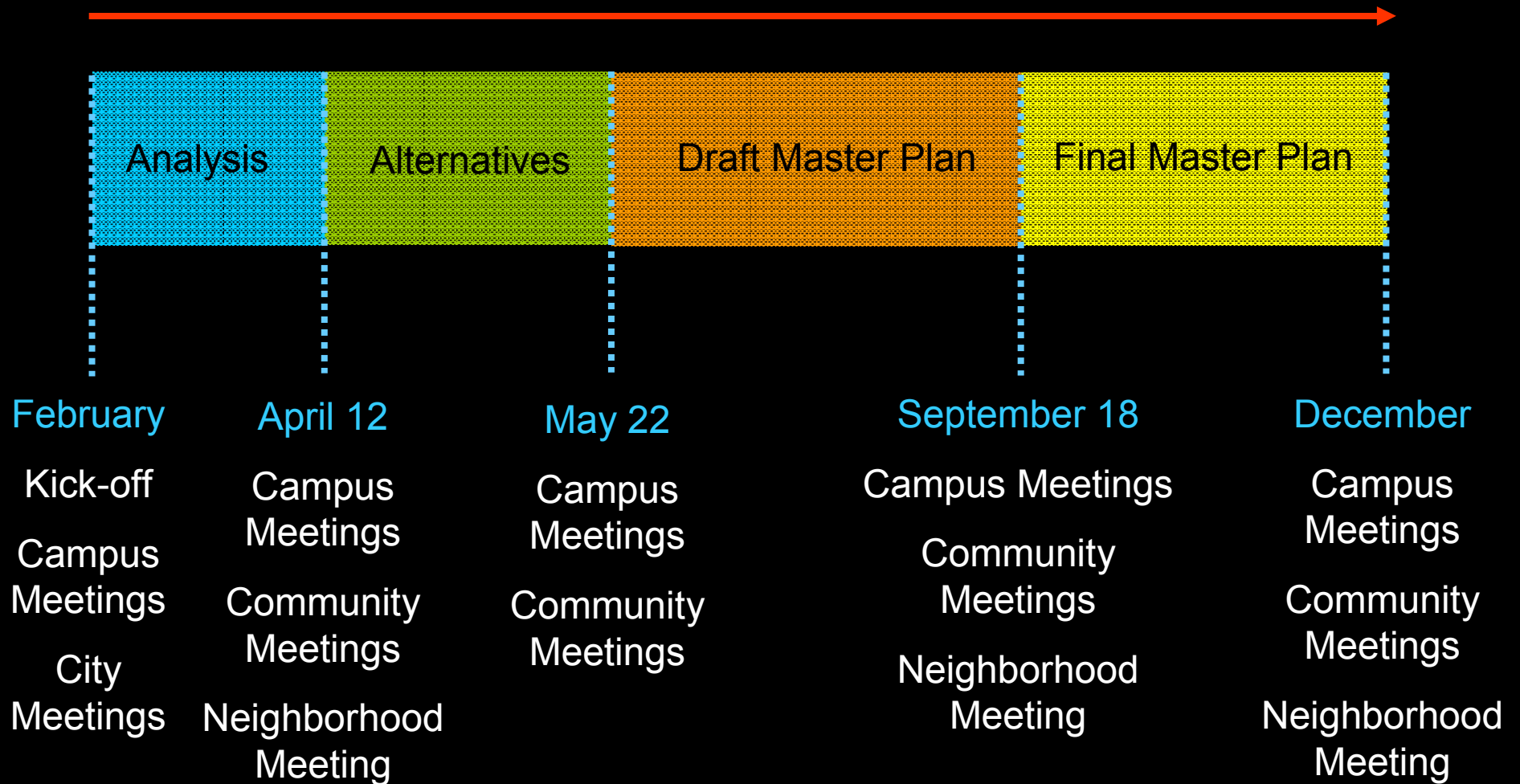
Osborn

Steven Hovancsek

# WHY A MASTER PLAN?

- Mission = Place
  - Be a better University
- Enrollment Strategy
- Efficient Stewardship of our Land and Buildings
  - Parking
  - Recreation/ Athletic Fields
  - Campus Buildings
- Short and Long-term Priorities
- Engage the Community
  - Make a Win-Win
  - A Living Document

# SCHEDULE





# AGENDA

1. Context
2. Campus Analysis
3. Framework

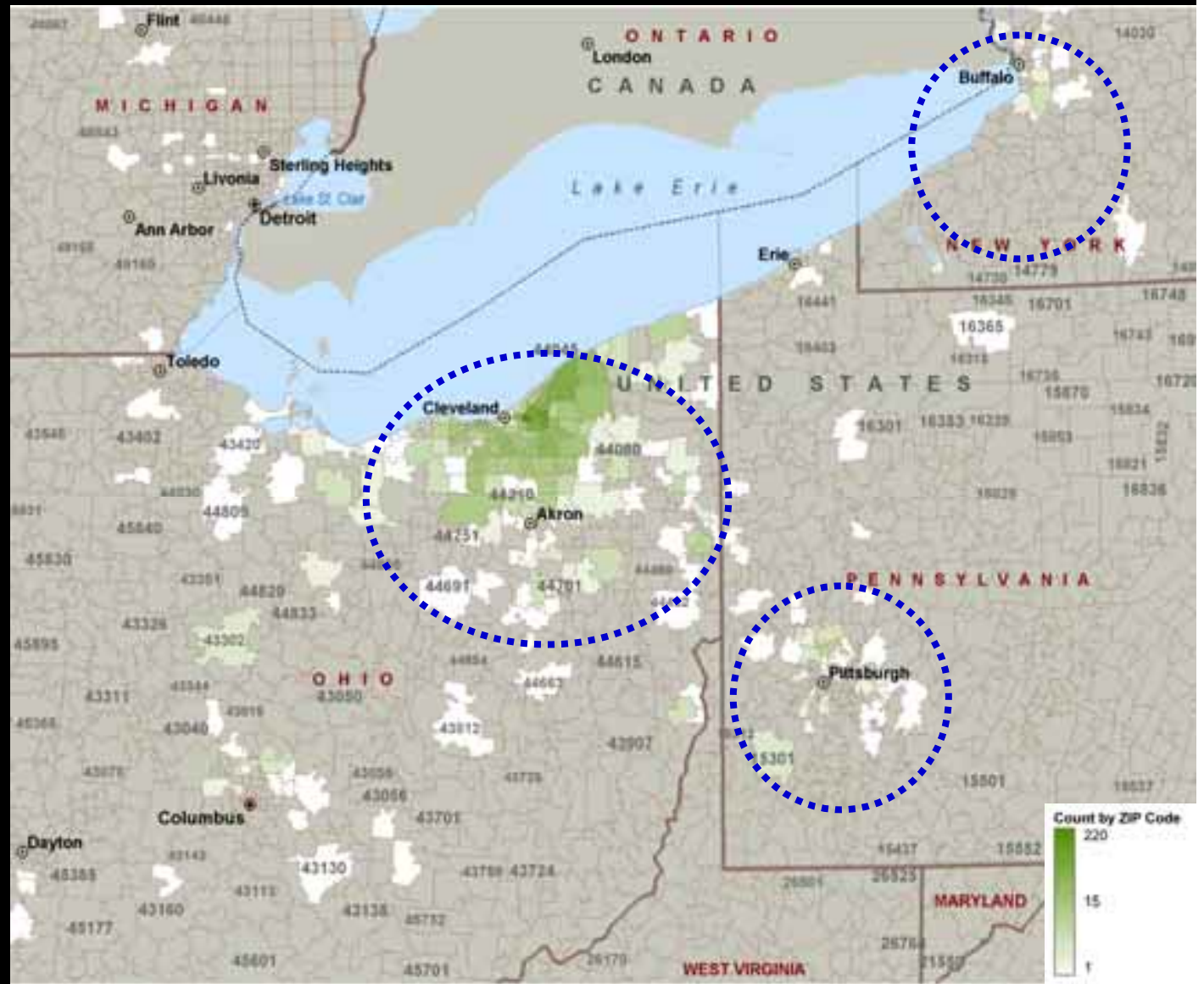


# CONTEXT



# CONTEXT

JCU Current  
Enrollment:  
Home Address

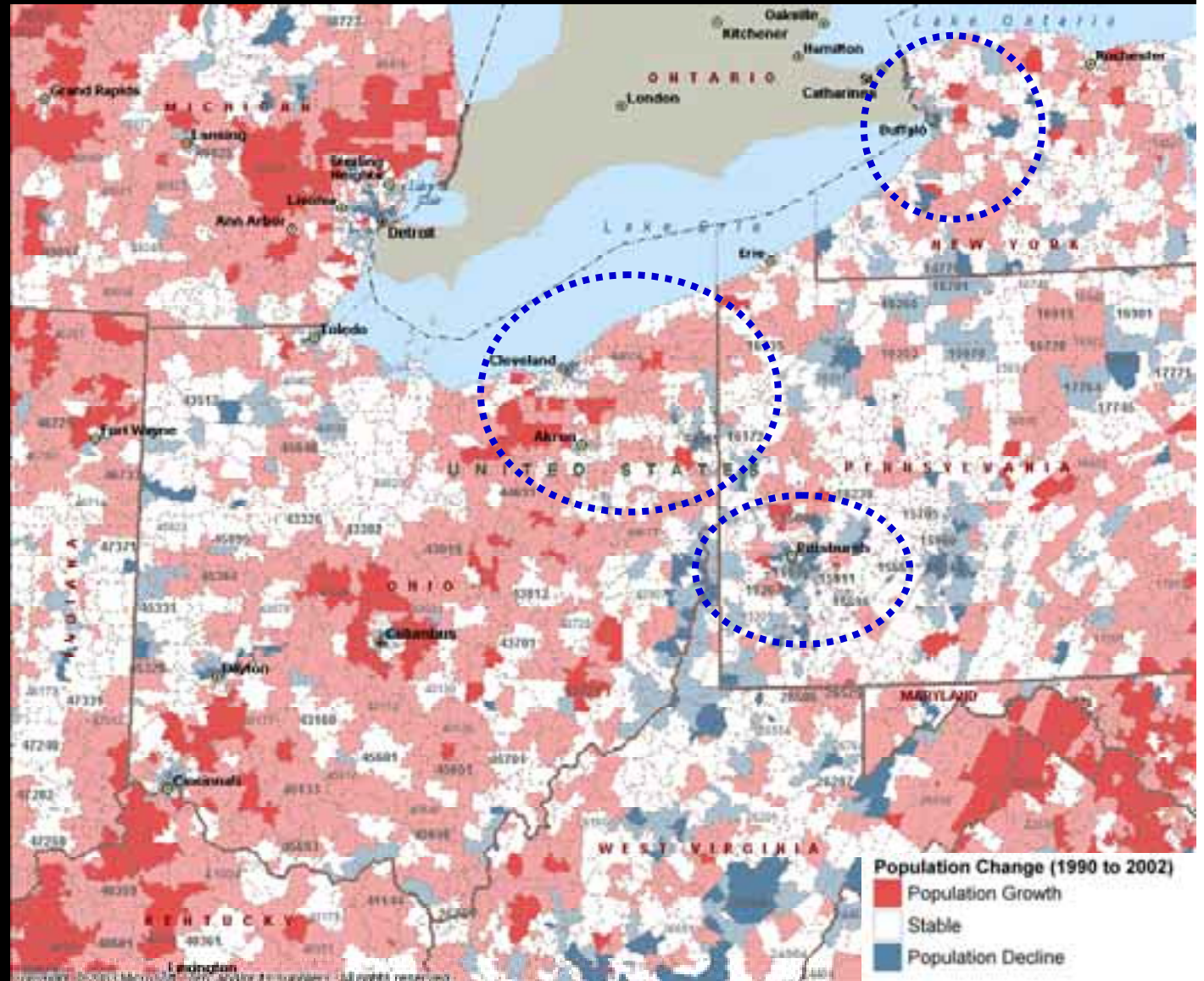




# CONTEXT

## Population Growth 1990-2002

- JCU future enrollment target areas?



# CONTEXT

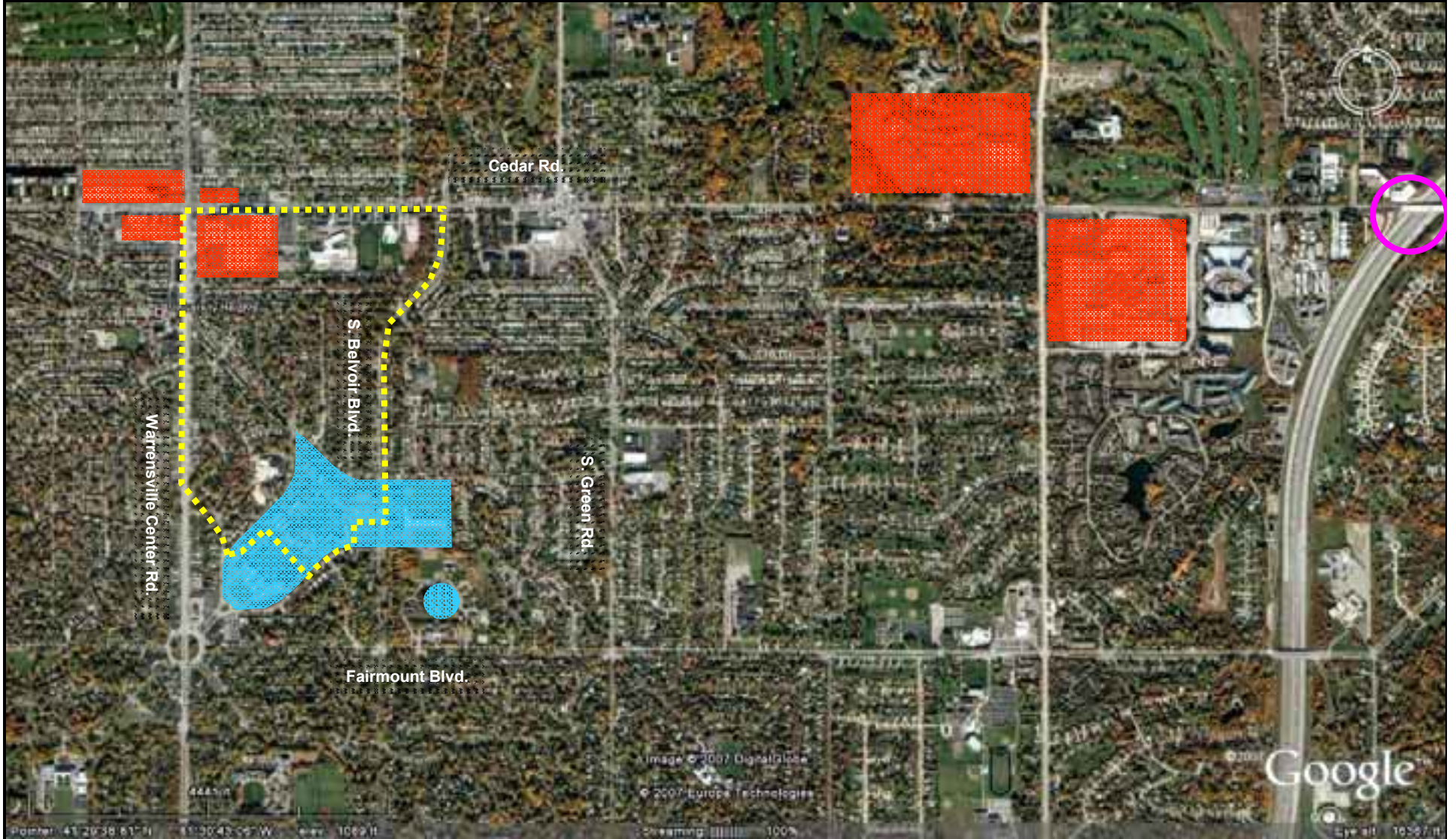
## Income Growth 1990-2002

- JCU future enrollment target areas?





# CONTEXT

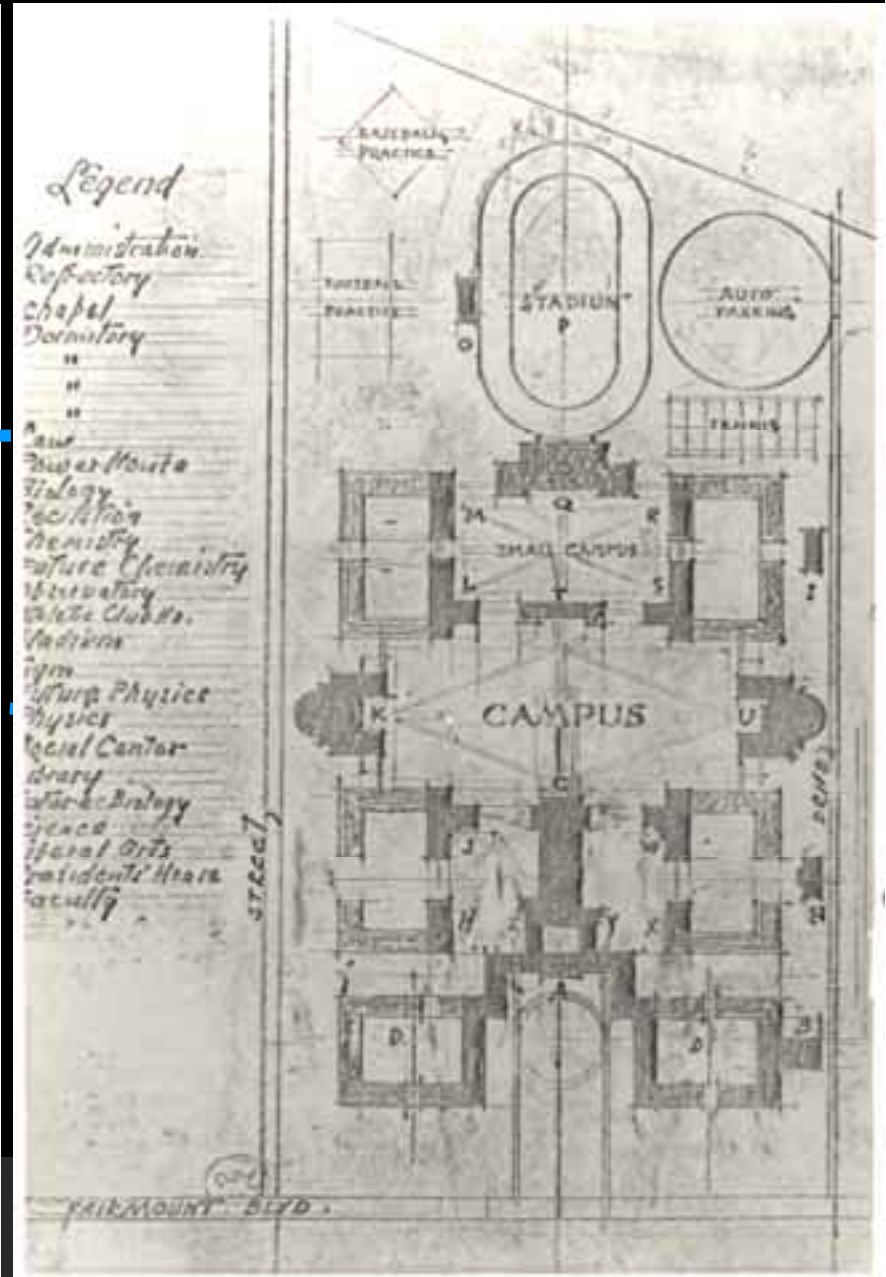
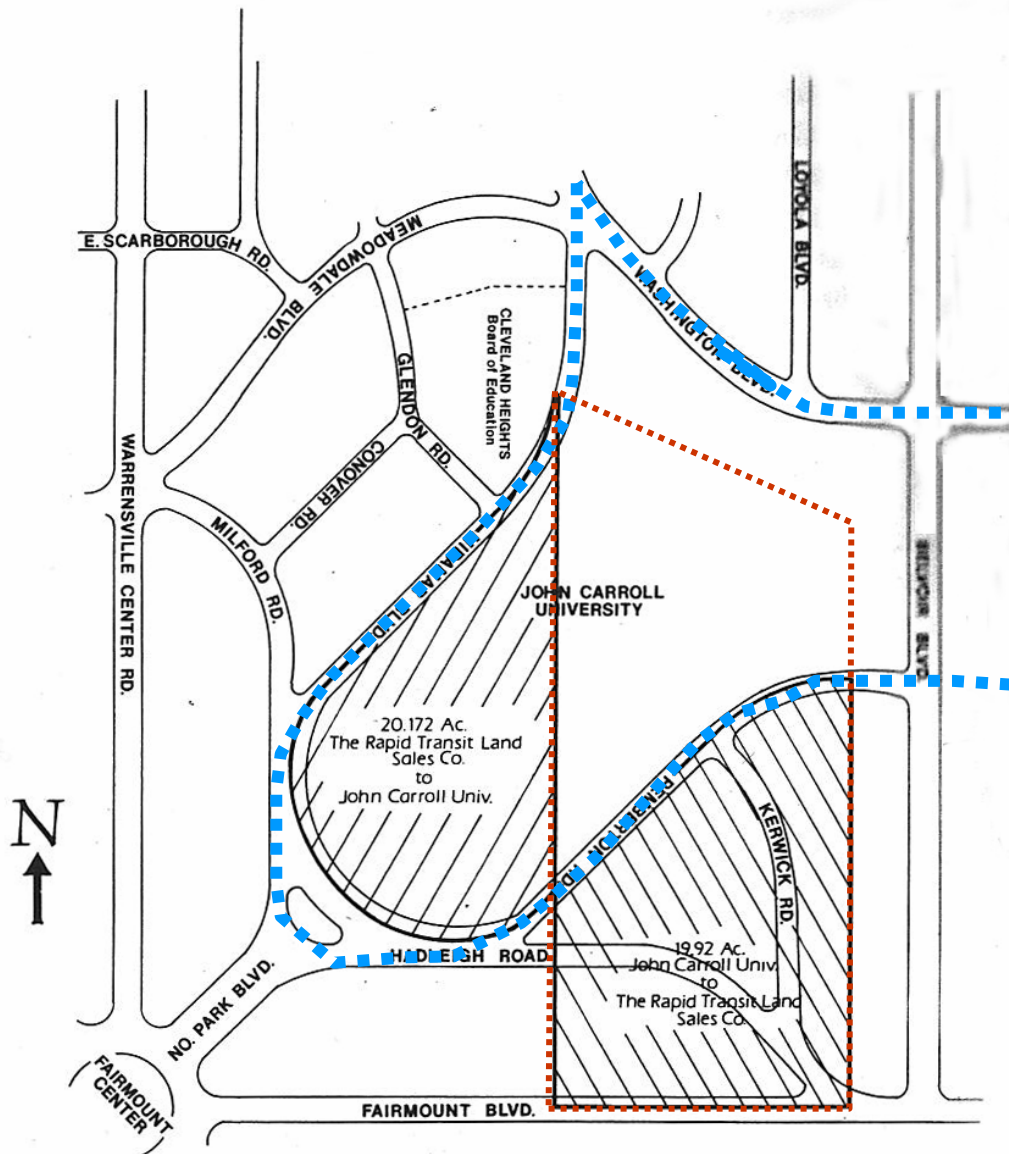


# CAMPUS ANALYSIS





# CAMPUS ANALYSIS: HISTORICAL GROWTH



Map showing the exchange of property after original purchase in 1923



# CAMPUS ANALYSIS: HISTORICAL GROWTH



# CAMPUS ANALYSIS: HISTORICAL GROWTH



Pre-1930: Campus Master Plan

S A S A K I



# CAMPUS ANALYSIS: HISTORICAL GROWTH



1931: Campus Master Plan

S A S A K I



# CAMPUS ANALYSIS: HISTORICAL GROWTH



1935: Original Campus Buildings

S A S A K I

# CAMPUS ANALYSIS: HISTORICAL GROWTH



1950's

S A S A K I

# CAMPUS ANALYSIS: HISTORICAL GROWTH



1960's and 1970's

S A S A K I



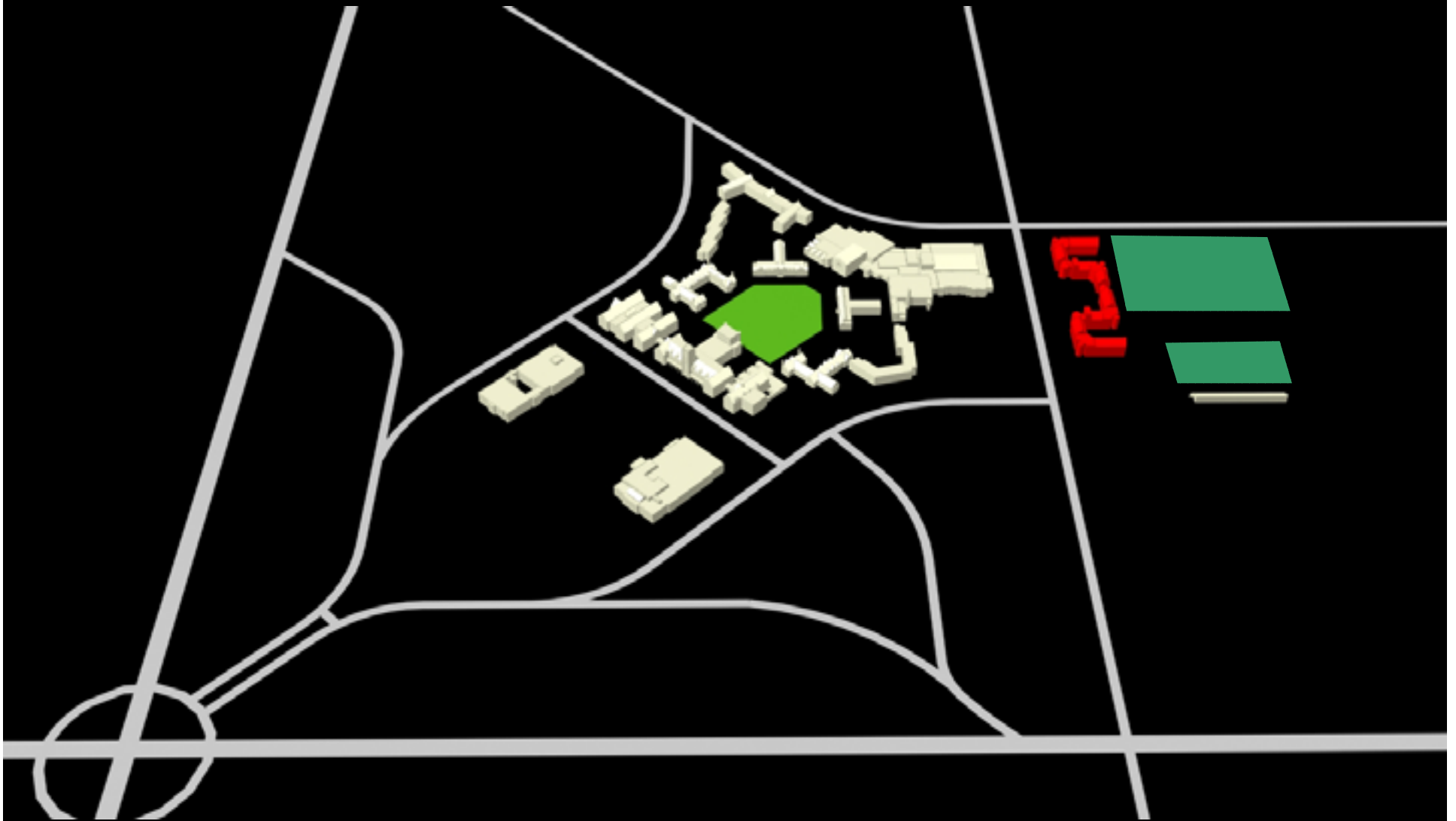
# CAMPUS ANALYSIS: HISTORICAL GROWTH



1980's and 1990's

S A S A K I

# CAMPUS ANALYSIS: HISTORICAL GROWTH



Campion and Hamlin

S A S A K I

# CAMPUS ANALYSIS: HISTORICAL GROWTH



Dolan Science Center

S A S A K I



# CAMPUS ANALYSIS: HISTORICAL GROWTH



Don Shula Stadium

S A S A K I

# CAMPUS ANALYSIS





# CAMPUS ANALYSIS



Connectivity: 10-minute walk circle



# CAMPUS ANALYSIS



Axes and Icons

# CAMPUS ANALYSIS



Outdoor Rooms



# CAMPUS ANALYSIS



Athletic Fields



# CAMPUS ANALYSIS



Gateways and Arrival

# CAMPUS ANALYSIS



Edges and Barriers



# CAMPUS ANALYSIS



Parking

11 acres of parking

17.5% of campus land

Dominates edges, first impression





# CAMPUS ANALYSIS



# CAMPUS ANALYSIS





# CAMPUS ANALYSIS





# CAMPUS ANALYSIS: SYNTHESIS



# CAMPUS ANALYSIS: SYNTHESIS





# CAMPUS ANALYSIS: SYNTHESIS





# CAMPUS ANALYSIS: SYNTHESIS



# CAMPUS ANALYSIS

## Athletic / Recreation Fields

- Need for additional multi-purpose recreation fields
- Enhance softball field and related facilities
- Consideration to add a field house for athletics practice



# CAMPUS ANALYSIS: PARKING

- Total parking = 1,621 spaces
- Replacement parking for Hamlin Quad is **250+** spaces
- Over time, parking demand could increase to **300-500** additional spaces
  - Increased on-campus residential students
  - Increased enrollment and staff projections





# FRAMEWORK



# FRAMEWORK



# FRAMEWORK





# FRAMEWORK



# FRAMEWORK





# FRAMEWORK: PLANNING PRINCIPALS

## 1. Focus on academic quality





# FRAMEWORK: PLANNING PRINCIPALS

## 2. Strengthen the living/learning environment on campus ("living rooms")



# FRAMEWORK: PLANNING PRINCIPALS

## 3. Organize a series of campus districts



# FRAMEWORK: PLANNING PRINCIPALS

## 4. Use existing resources wisely





# FRAMEWORK: PLANNING PRINCIPALS

## 5. Create shared space with the community



# FEEDBACK: WEBSITE



The screenshot shows the 'Feedback' form on the John Carroll University website. The form is titled 'John Carroll University Master Plan' and includes a 'SASAKI' logo. The form contains the following fields:

- \*First Name
- \*Last Name
- \*Email
- Organization
- Title
- \*Affiliation
- \*Topic
- \*Comment

Below the form are 'Send' and 'Clear' buttons. At the bottom of the page, there is a 'Home > Feedback' link.



# DISCUSSION

