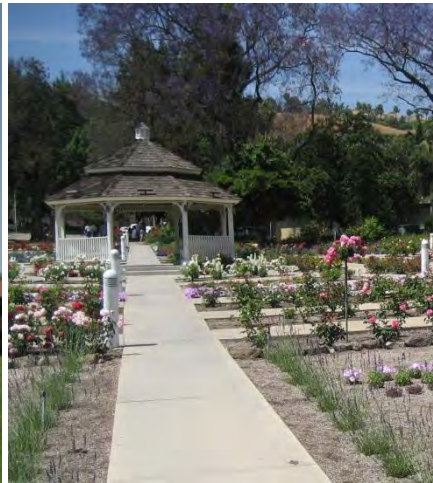


# CAL POLY POMONA

CAMPUS MASTER PLAN FORUM | FEBRUARY 11, 2010



# EXISTING CONDITIONS ANALYSIS



CSU San Bernardino

CSU Los Angeles

Cal Poly Pomona

UC Riverside

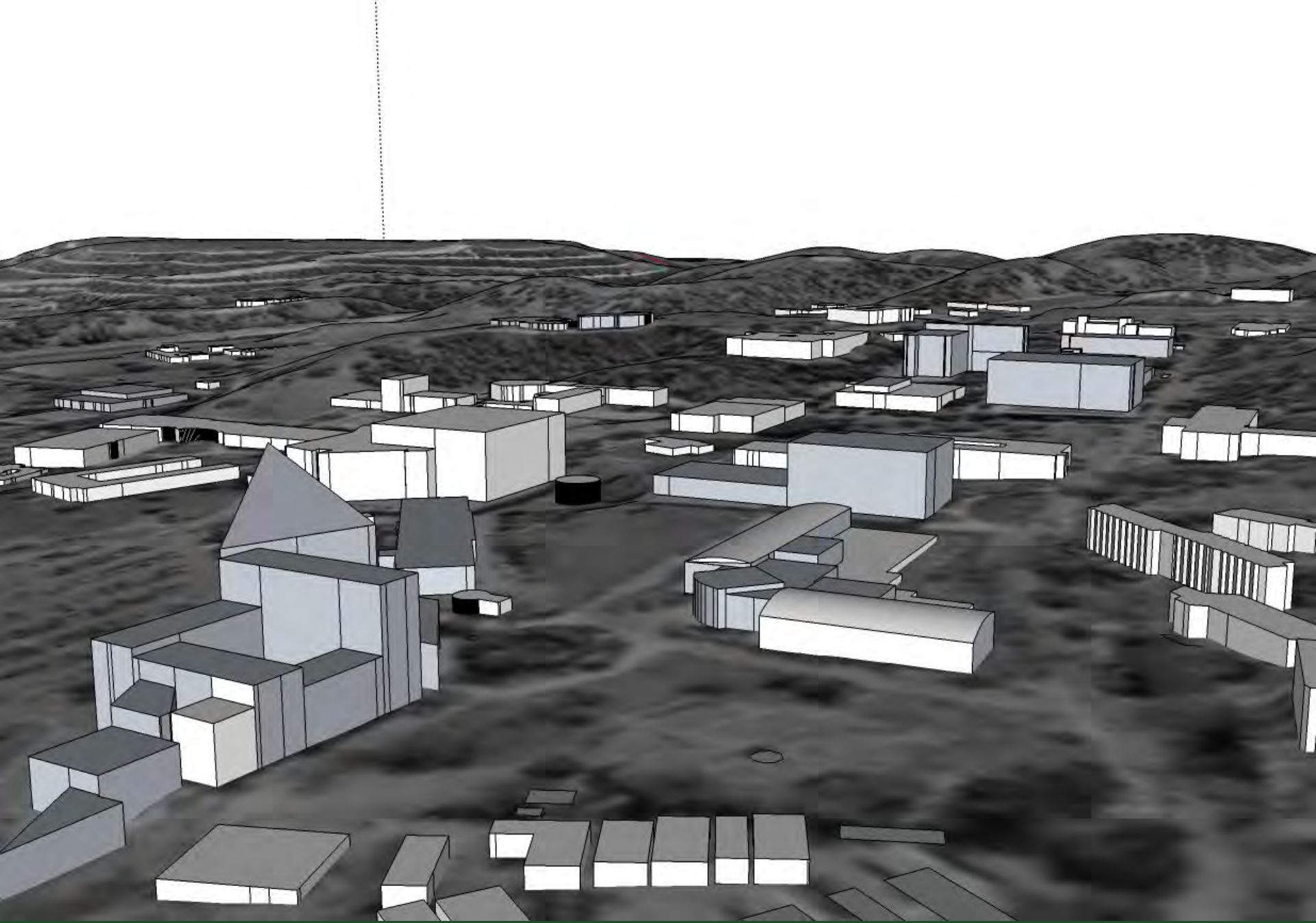
CSU Dominguez Hills

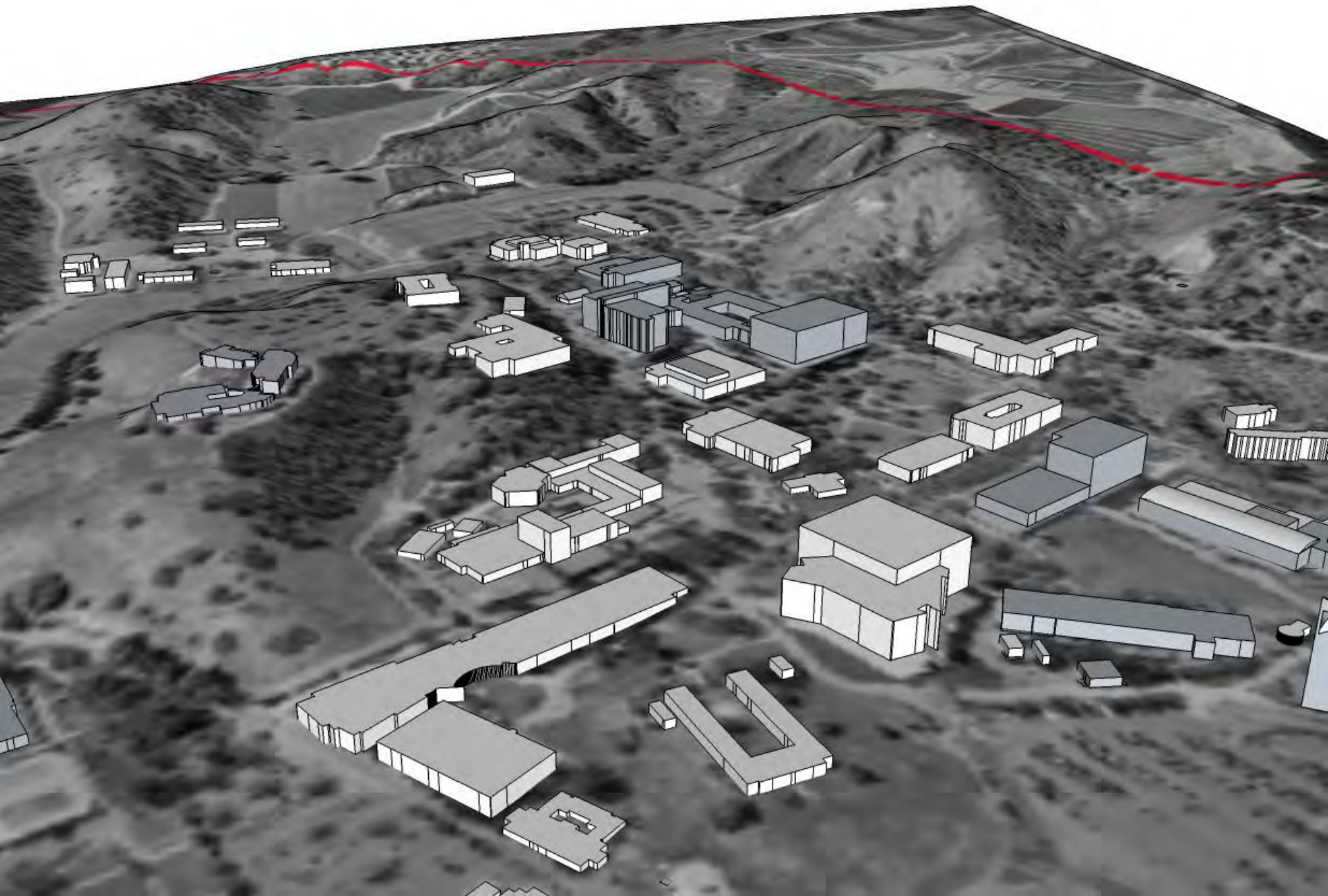
CSU Fullerton

CSU Long Beach

UC Irvine









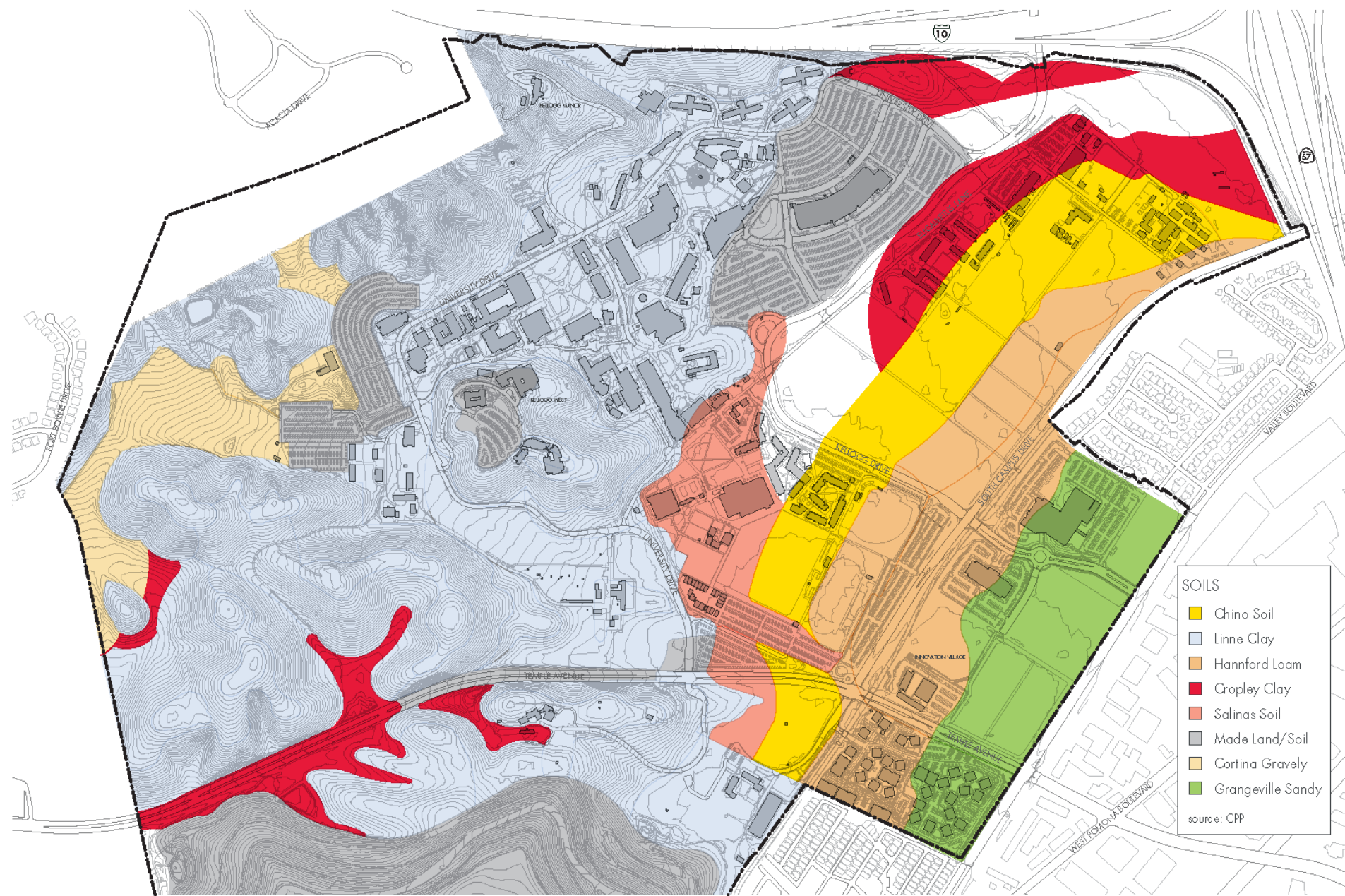
# TOPOGRAPHY/LANDSCAPE





FEBRUARY 2010

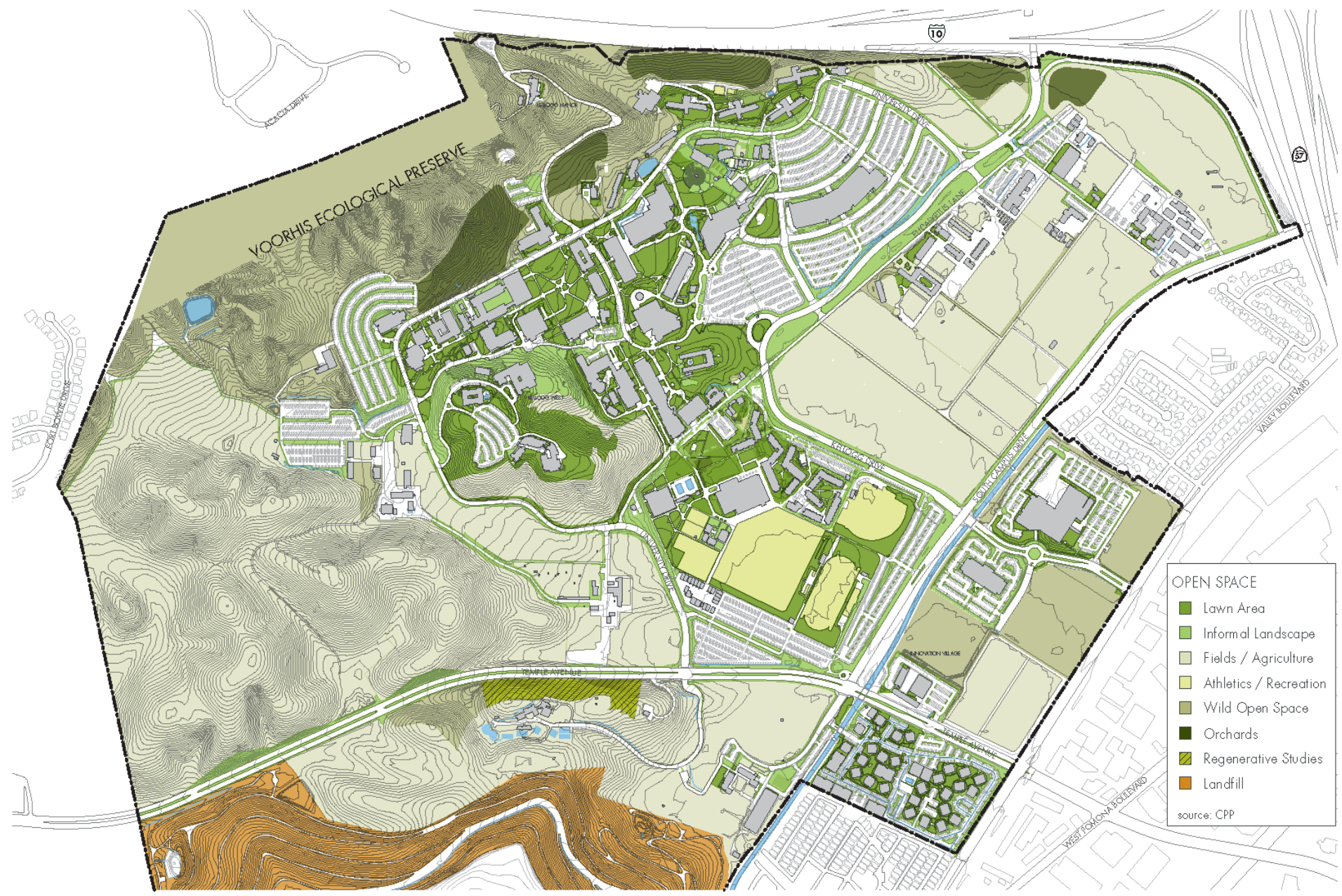




**SOILS**

- Chino Soil
- Linne Clay
- Hannford Loam
- Cropley Clay
- Salinas Soil
- Made Land/Soil
- Cortina Gravelly
- Grangeville Sandy

source: CPP



**OPEN SPACE**

- Lawn Area
- Informal Landscape
- Fields / Agriculture
- Athletics / Recreation
- Wild Open Space
- Orchards
- Regenerative Studies
- Landfill

source: CPP



KELLOGG HOUSE

ROSE GARDEN

DUCK POND (ARTESIAN WELL)

HORSE PASTURES

PRESIDENT'S HOUSE / MANOR HOUSE

JAPANESE GARDEN

KELLOGG FUERTE GROVE

OLD STABLES

HORSE PASTURES

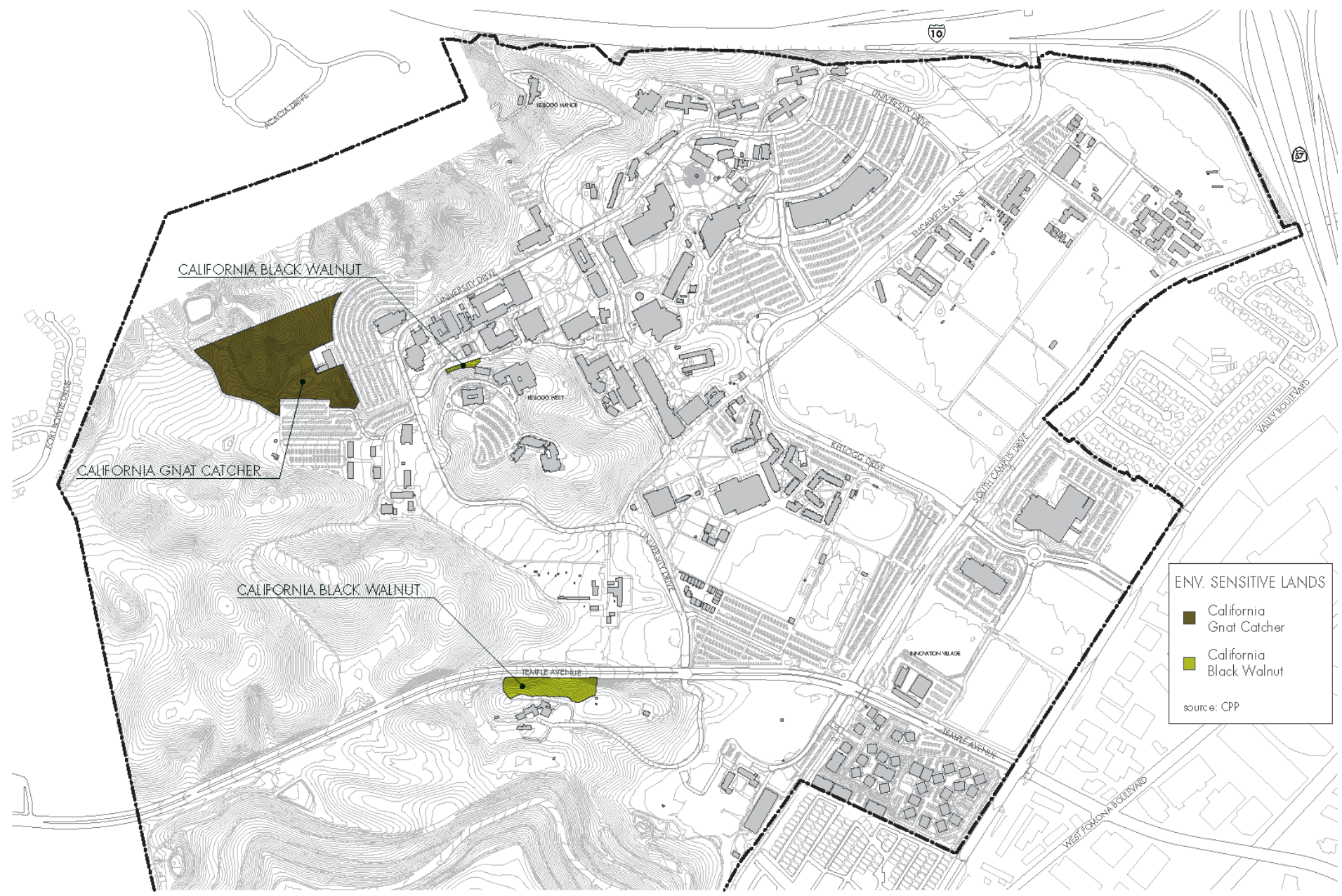
AGRICULTURE VALLEY

RODEO VALLEY

**PRIMARY HISTORIC & CULTURAL ASSETS**

- Historic/Cultural Value
- Trees lining campus entrances

source: CPP



CALIFORNIA BLACK WALNUT

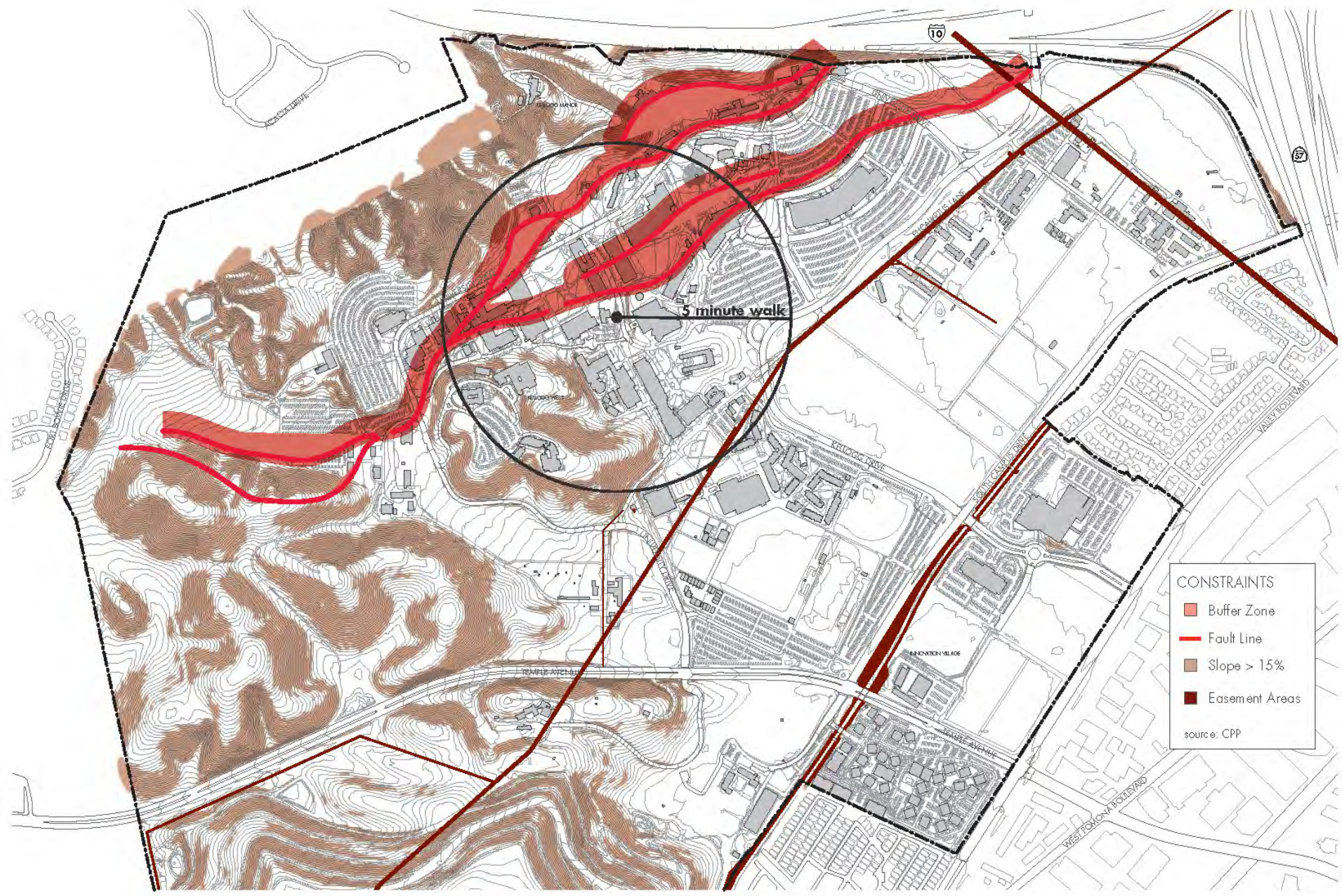
CALIFORNIA GNAT CATCHER

CALIFORNIA BLACK WALNUT

**ENV. SENSITIVE LANDS**

- California Gnat Catcher
- California Black Walnut

source: CPP



**CONSTRAINTS**

- Buffer Zone
- Fault Line
- Slope > 15%
- Easement Areas

source: CPP

# BUILDING/LAND USE



**SURROUNDING LAND USE**

- Residential
- Business and Technology
- Park/Open Space
- Community Commercial
- Industrial
- Institutional

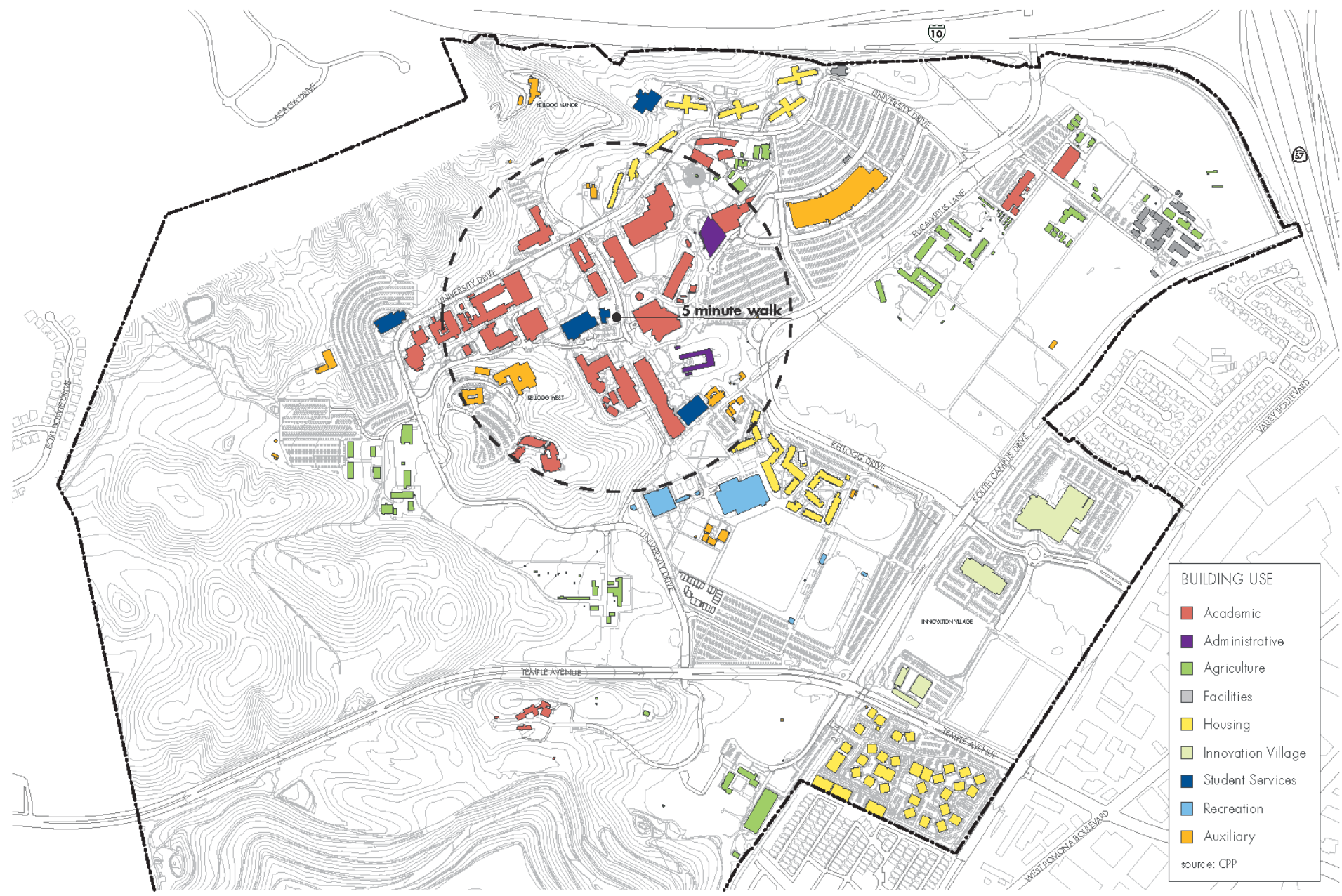




**ACADEMIC CLUSTERS**

- College of Agriculture
- College of Letters, Arts, and Social Sciences
- College of Science
- College of Engineering
- College of Education & Integrative Studies
- College of Business Administration
- College of Environmental Design
- General University
- Collins College of Hospitality Management

source: CPP

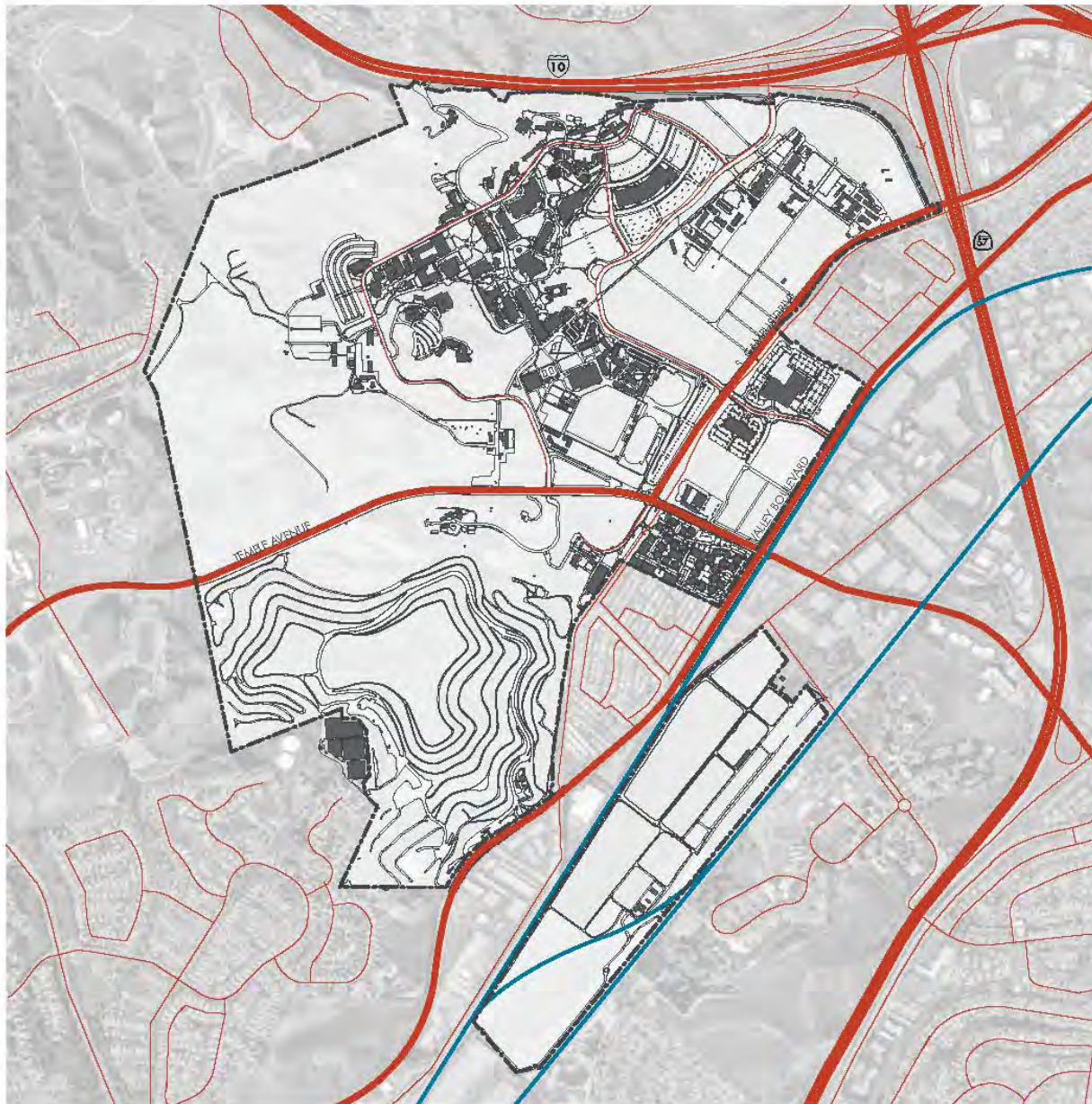


**BUILDING USE**

- Academic
- Administrative
- Agriculture
- Facilities
- Housing
- Innovation Village
- Student Services
- Recreation
- Auxiliary

source: CPP

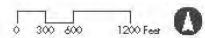
# CIRCULATION

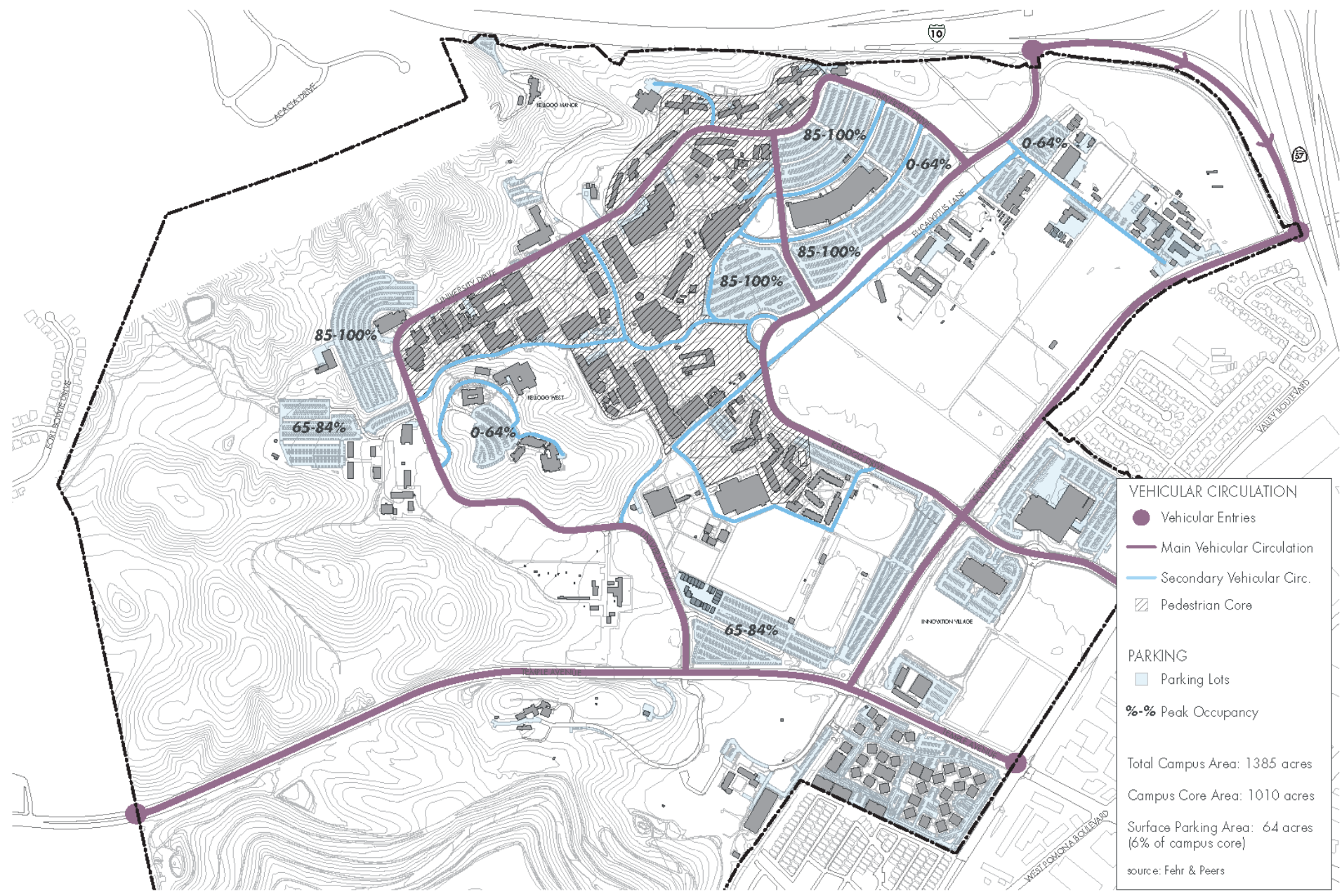


REGIONAL CIRCULATION

- █ Highways
- █ Major Roads
- █ Local Roads
- █ Railways

FEBRUARY 2010





**VEHICULAR CIRCULATION**

- Vehicular Entries
- Main Vehicular Circulation
- Secondary Vehicular Circ.
- ▨ Pedestrian Core

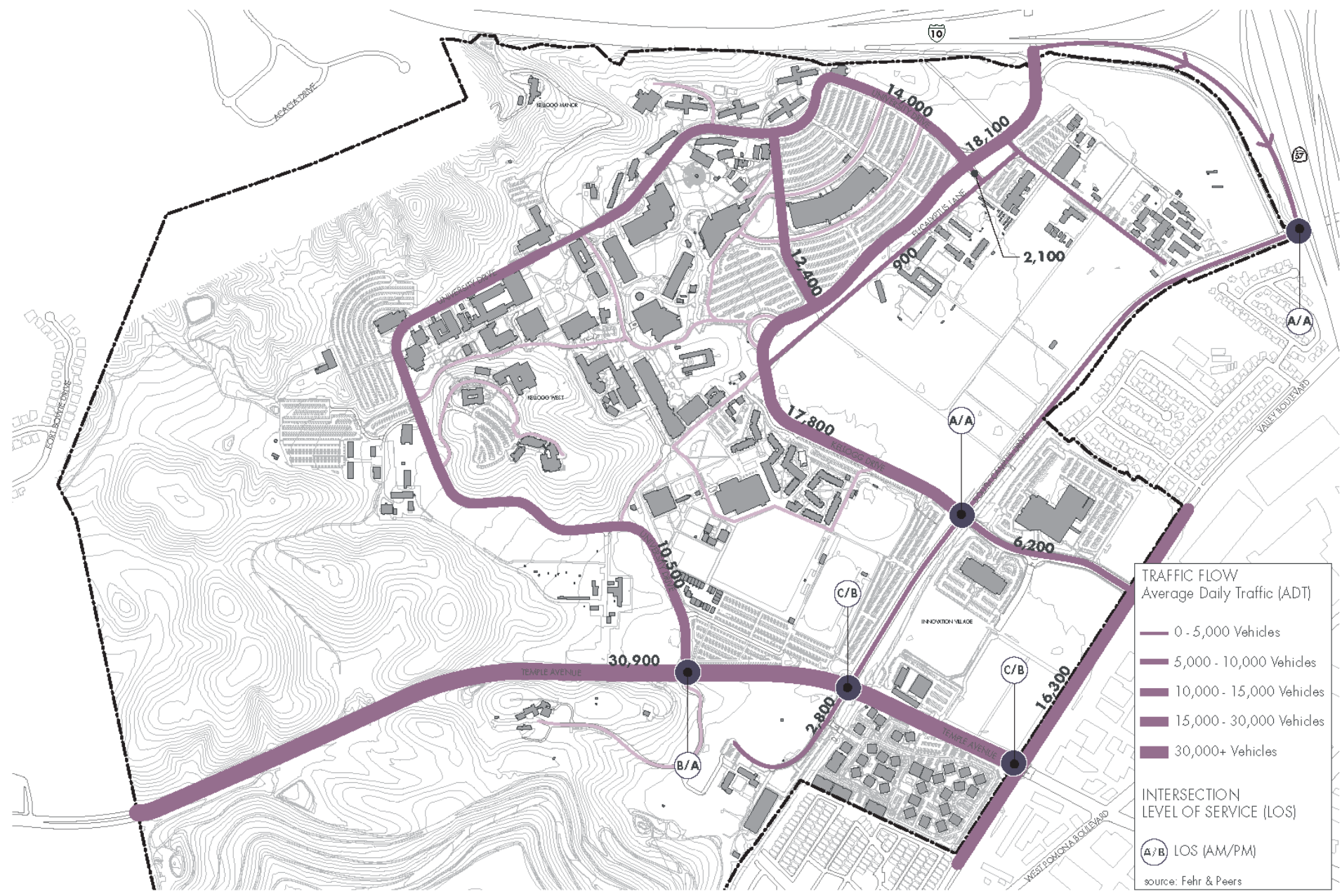
**PARKING**

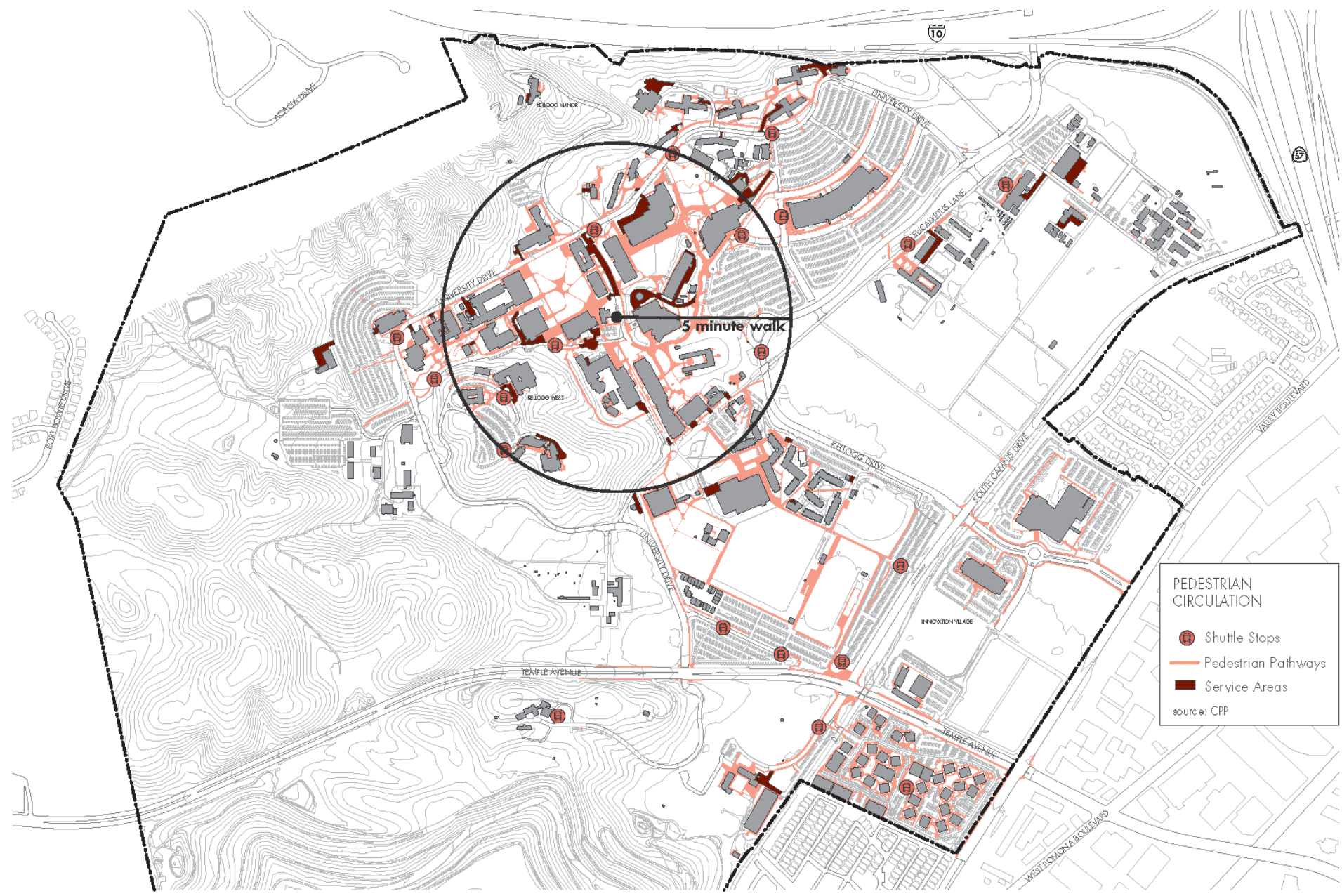
- Parking Lots

%- % Peak Occupancy




Total Campus Area: 1385 acres  
 Campus Core Area: 1010 acres  
 Surface Parking Area: 64 acres  
 (6% of campus core)

source: Fehr & Peers

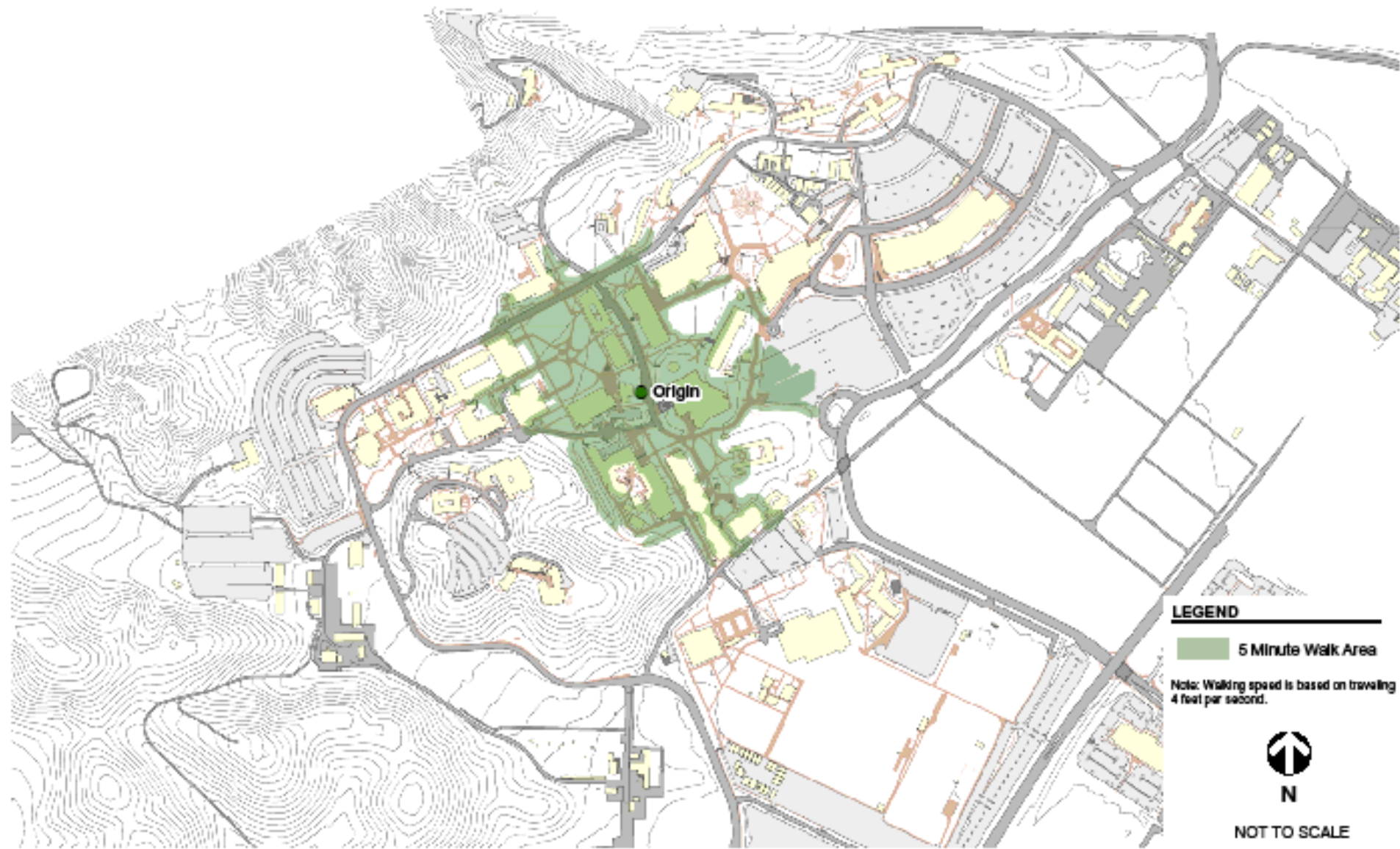




**PEDESTRIAN CIRCULATION**

-  Shuttle Stops
-  Pedestrian Pathways
-  Service Areas

source: CPP







### RESPONDENT CHARACTERISTICS

- **Off-campus students and faculty generally travel to campus 3-5 days per week.**
- **Staff members generally travel to campus 5 days per week.**
- **On-campus students leave campus, on average, 3-4 times/week.**
- **Over 75% of respondents live in Eastern LA County, Western San Bernardino County or Inland OC (~30 minute commute).**

### TDM RESPONSES

- **Most responsive TDM measures were Guaranteed Ride Home and Cal Poly-only shuttle from residential area.**
- **Least responsive measures were travel incentives for commuting off-peak and improving Bronco Express.**
- **On-Campus Students somewhat responsive to car sharing program.**
- **Increasing parking fees would affect staff travel behavior the greatest and faculty the least; many respondents noted that they would still drive, but park off-campus.**

### TRAVEL CHARACTERISTICS

- **Nearly 30% of staff commutes by modes other than drive alone.**
- **Approximately 20% of off-campus students and 12% of faculty commute by alternative modes.**
- **Most staff commute during peak hours; students and faculty travel depending on class schedules.**
- **Vast majority of respondents park once, closest to classroom or office.**
- **Few use campus shuttle.**

### MAJOR TAKEAWAYS

- **Staff is most restricted to peak-hour schedule based on full-time office workweek.**
- **Staff is most likely to change travel behaviors due to incentives/disincentives.**
- **Class schedule plays role in travel behaviors for off-campus students and faculty.**
- **Off-campus students and faculty more likely to live farther from campus and rely on own vehicle for transport**

# QUALITY OF SPACE



**INTENSITY OF USE**  
 class enrollment/  
 institutional gross square feet

- 0 - 10 students/gsf
- 11 - 20 students/gsf
- 21 - 30 students/gsf
- 31 - 40 students/gsf
- 41+ students/gsf

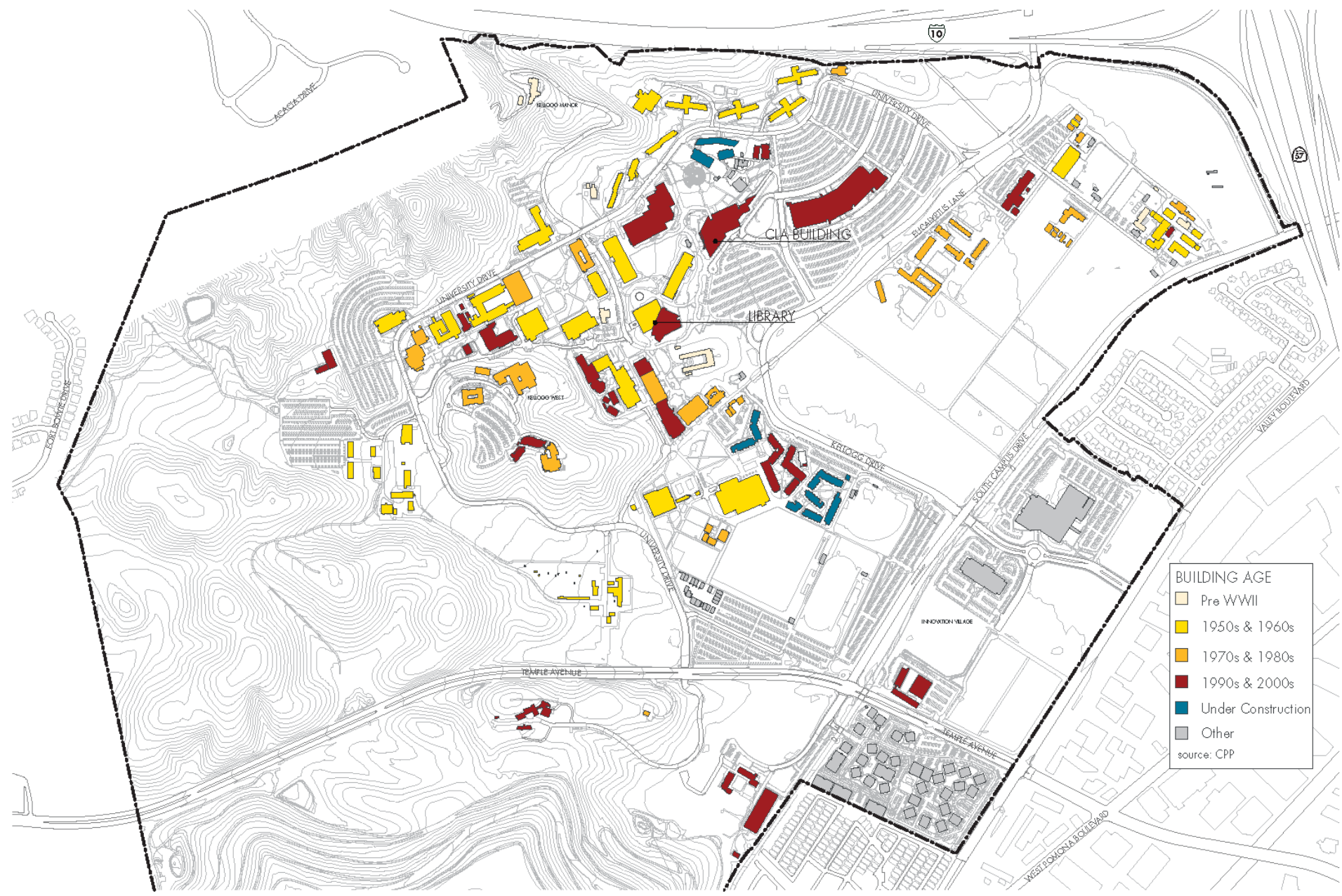
source: CPP



**FACILITIES  
CONDITION INDEX**

- 0 - 19 rating
- 20 - 39 rating
- 40 - 59 rating
- 60+ rating

source: CPP



# CSU PLANNING GUIDELINES

# CSU PLANNING GUIDELINES

State allots set amount of space per student, depending on use type

Lecture classroom = 15 square feet per student

Teaching lab allocation varies depending on subject and type of student,  
but varies from 30 to 111 square feet per student.

Offices = 110 square feet per faculty FTE

Small allotments for administration and storage

In general, the State does not fund meeting space, informal seating, etc.

The State also has utilization standards for instructional space

Lecture classrooms – schedule 53 hours per week, 66% seats occupied

Lower division labs – 27.5 hours per week, 85% occupied

Upper division labs – 22 hours per week, 80% occupied



# CAL POLY POMONA

CAMPUS MASTER PLAN FORUM | FEBRUARY 11, 2010

