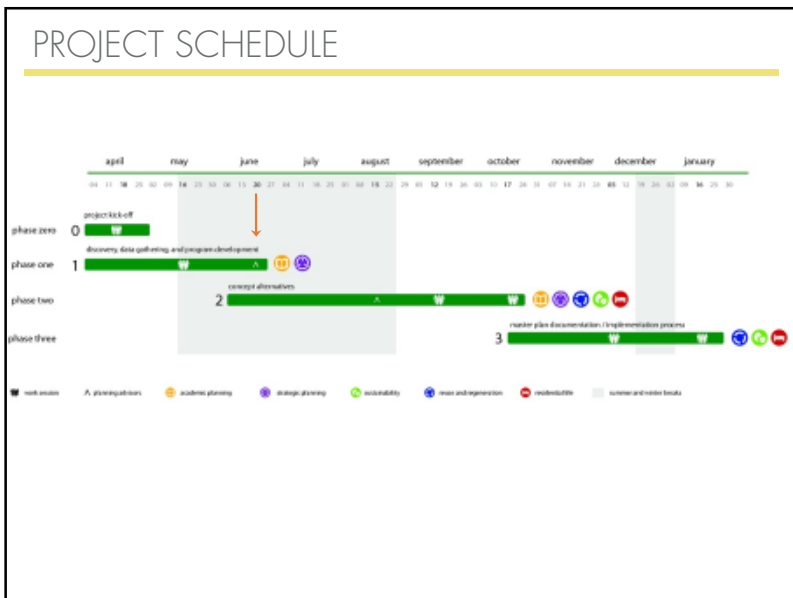
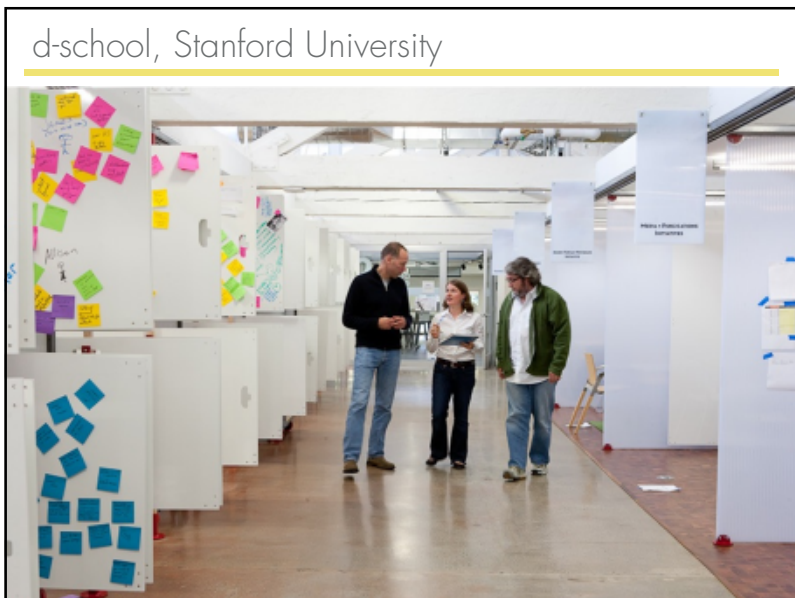
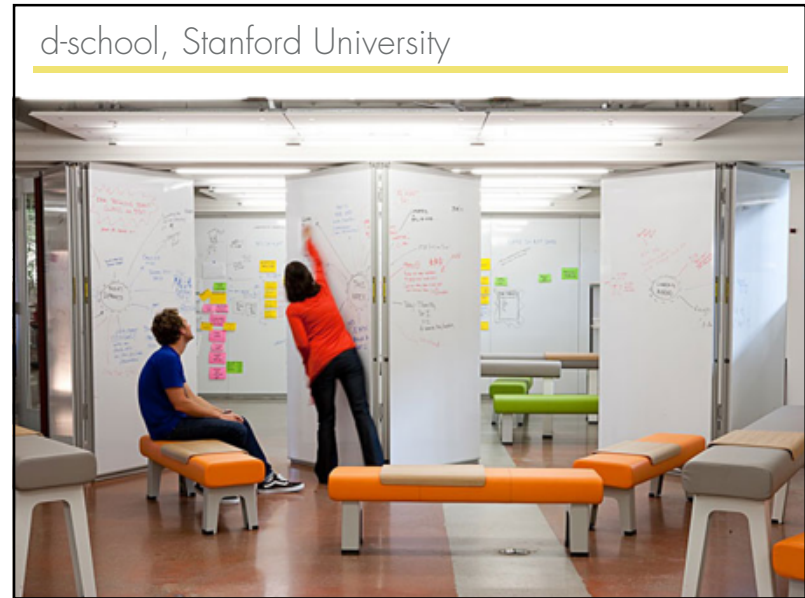

BABSON COLLEGE CAMPUS MASTER PLAN

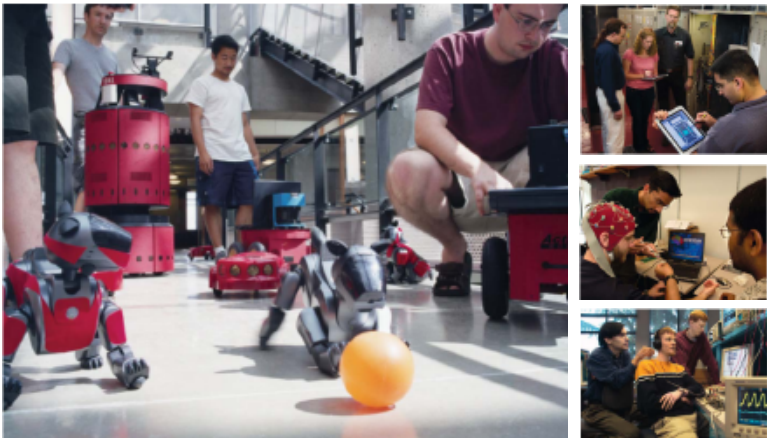
JUNE 14, 2011 ACCP MEETING



LEARNING ENVIRONMENT



Allen Center, UW



St. Edwards University



“Students present ideas, come up with activities, manage day-to-day care and conflicts...That’s a big piece of this whole experience—students learn to take ownership.”

- Lisa MacDonald
Director, Residential Living, Campus Life, Babson College

UNC Chapel Hill's **Connected Learning**



Rutgers' Discovery Houses

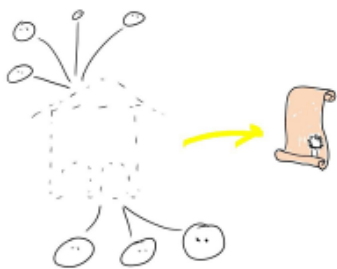


Fordham's Integrated Learning Communities



"Innovation doesn't come from innovation. It comes from interaction."

- Cheryl Kiser,
Executive Director, Babson Social Innovation Lab



Technology, Pedagogy and Classroom Design

"Scale Up" Classroom, North Carolina State University, TEAL predecessor

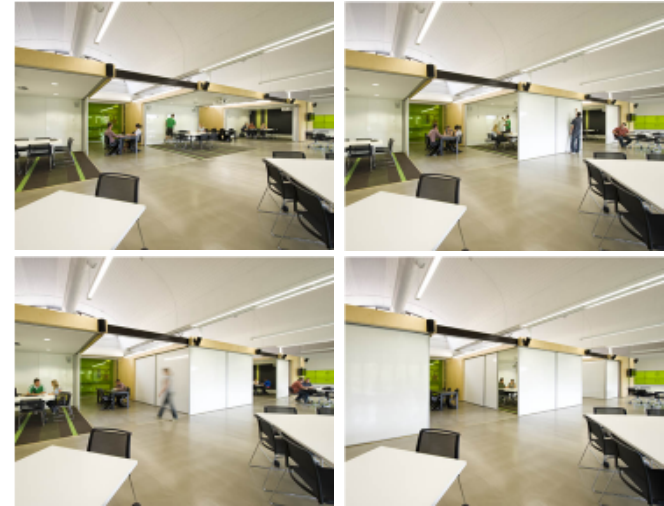


High Impact Learning Spaces

La Sierra University's Hiperwall System



University of South Australia



FIDM



Macquarie Group



UTILIZATION

PROCESS

Based on interviews and data provided by the Registrar and Scheduling

Data reflects the following terms:

- Summer 2010
- Fall 2010
- Spring 2011

Analysis is two-fold:

- Weekly histogram analysis reflects academic use between 8 am – 5 pm
- Individual room use reflects both academic and events use between 8 am – 9 pm

Types of events include:

- Film Showings
- Meetings / Conferences
- Presentations
- Study Groups
- Exams

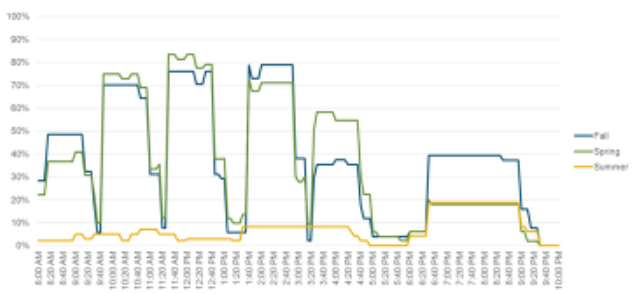
Does not capture use from BECC and Athletics; Fast Track uses rooms every 6th Friday

Findings were reviewed with the Registrar

ACADEMIC UTILIZATION

Monday

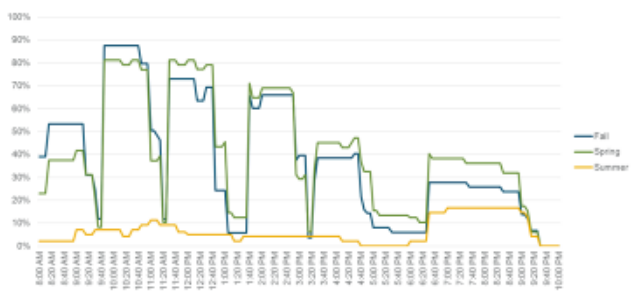
- Fall Average: 47.8%
- Spring Average: 50.8%
- Summer Average: 5.2%



ACADEMIC UTILIZATION

Tuesday

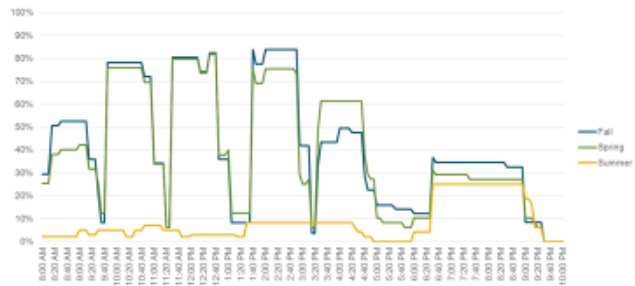
- Fall Average: 49.7%
- Spring Average: 50.4%
- Summer Average: 4.9%



ACADEMIC UTILIZATION

Wednesday

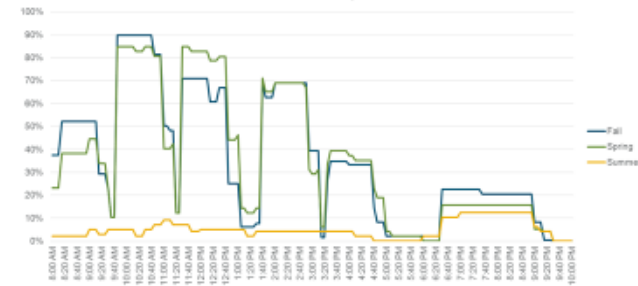
- Fall Average: 53.3%
- Spring Average: 52.3%
- Summer Average: 5.2%



ACADEMIC UTILIZATION

Thursday

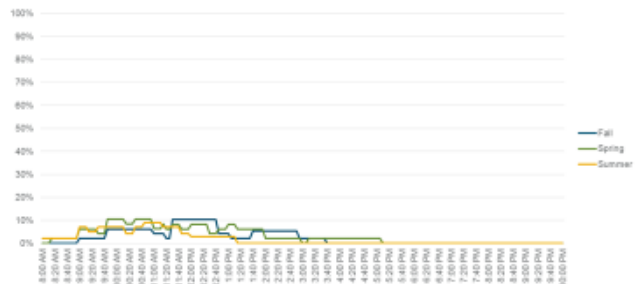
- Fall Average: 49.0%
- Spring Average: 50.2%
- Summer Average: 4.2%



ACADEMIC UTILIZATION

Friday

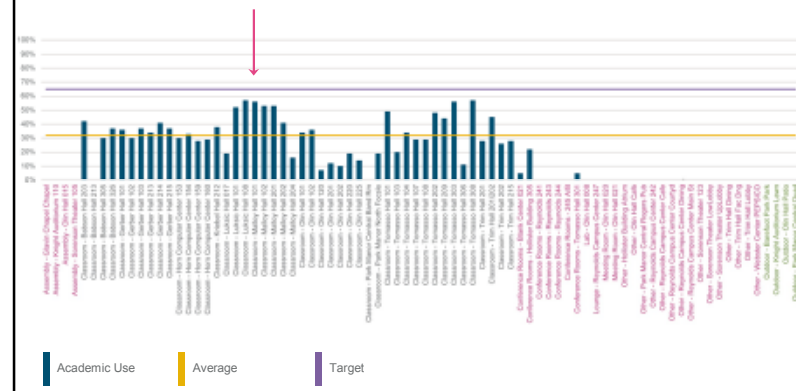
- Fall Average: 3.9%
- Spring Average: 4.9%
- Summer Average: 2.9%

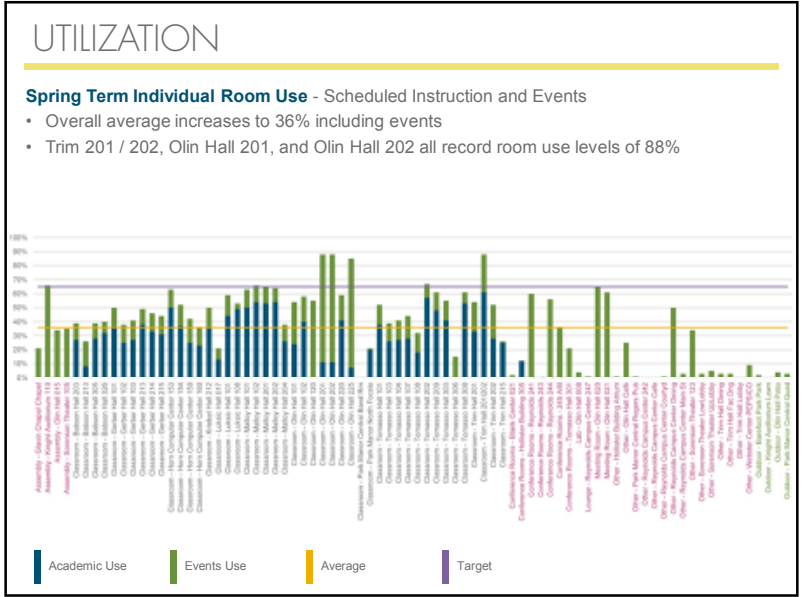
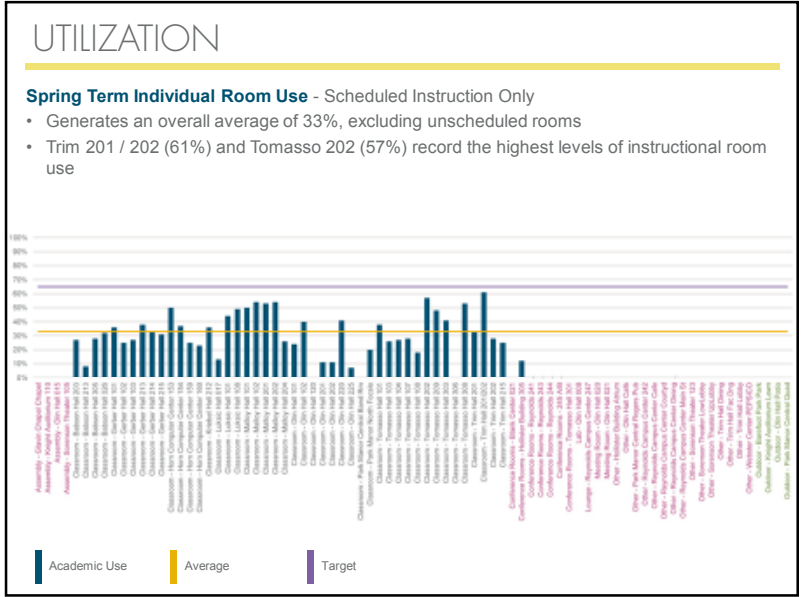
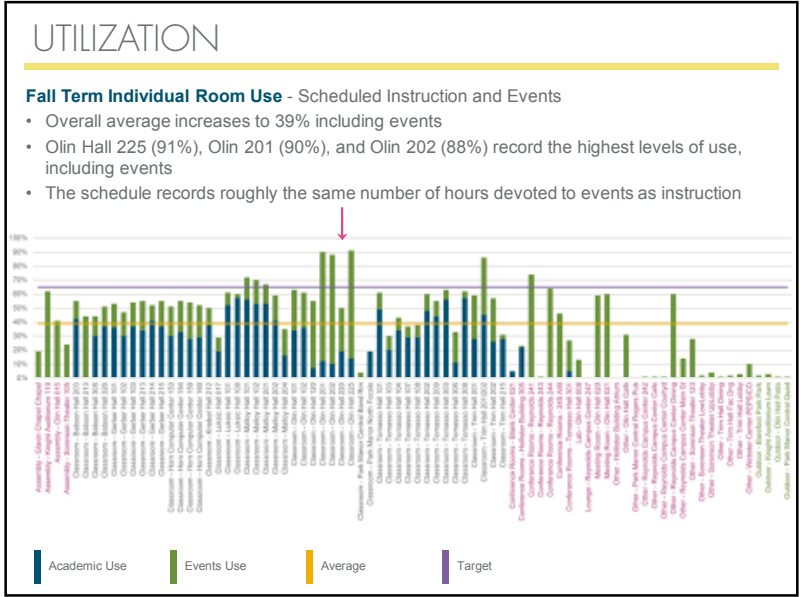


UTILIZATION

Fall Term Individual Room Use - Scheduled Instruction Only

- Generates an overall average of 32%, excluding unscheduled rooms
- Luksic Hall (43%) and Malloy Hall (44%) record the highest levels of instructional room use





CAMPUS FORM

EVOLUTION OF THE CAMPUS 1919 – 1922

How has the **evolution of the campus** impacted Babson's current campus form?
How will its unique history **shape the future**?



EVOLUTION OF THE CAMPUS 1919 – 1922



EVOLUTION OF THE CAMPUS 1923 – 1944



EVOLUTION OF THE CAMPUS 1923 – 1944



EVOLUTION OF THE CAMPUS 1945 – 1977

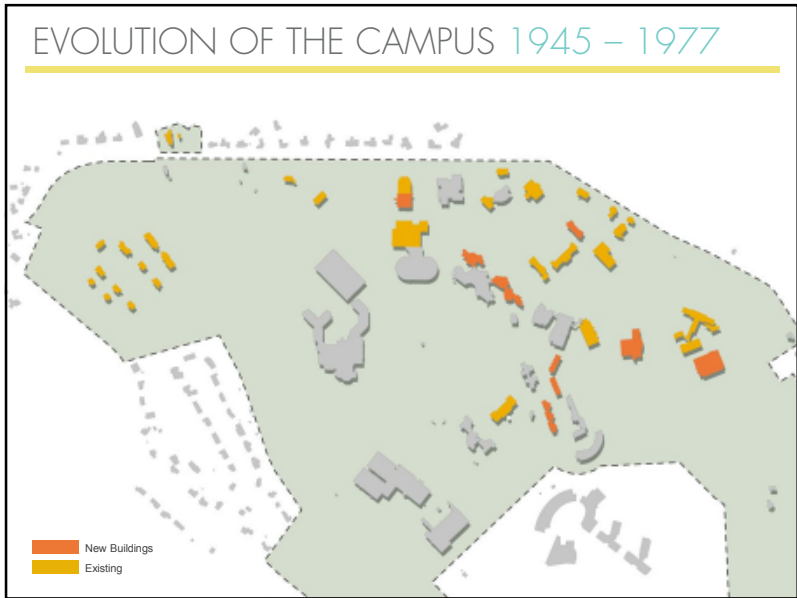
Parking Expansion

Park Manor Central

Malloy Hall

The Babson Campus 1968 Long Range Plan

Building Name	Year	Notes
Malloy Hall	1945	Original Building
Malloy Hall	1950	Expansion
Malloy Hall	1955	Expansion
Malloy Hall	1960	Expansion
Malloy Hall	1965	Expansion
Malloy Hall	1970	Expansion
Malloy Hall	1975	Expansion
Malloy Hall	1980	Expansion
Malloy Hall	1985	Expansion
Malloy Hall	1990	Expansion
Malloy Hall	1995	Expansion
Malloy Hall	2000	Expansion
Malloy Hall	2005	Expansion
Malloy Hall	2010	Expansion
Malloy Hall	2015	Expansion
Malloy Hall	2020	Expansion
Malloy Hall	2025	Expansion
Malloy Hall	2030	Expansion
Malloy Hall	2035	Expansion
Malloy Hall	2040	Expansion
Malloy Hall	2045	Expansion
Malloy Hall	2050	Expansion
Malloy Hall	2055	Expansion
Malloy Hall	2060	Expansion
Malloy Hall	2065	Expansion
Malloy Hall	2070	Expansion
Malloy Hall	2075	Expansion
Malloy Hall	2080	Expansion
Malloy Hall	2085	Expansion
Malloy Hall	2090	Expansion
Malloy Hall	2095	Expansion
Malloy Hall	2100	Expansion

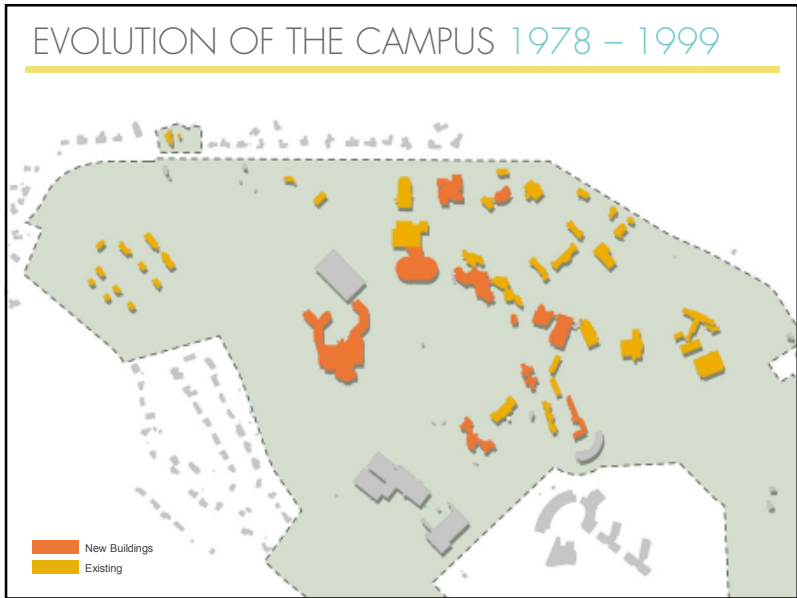


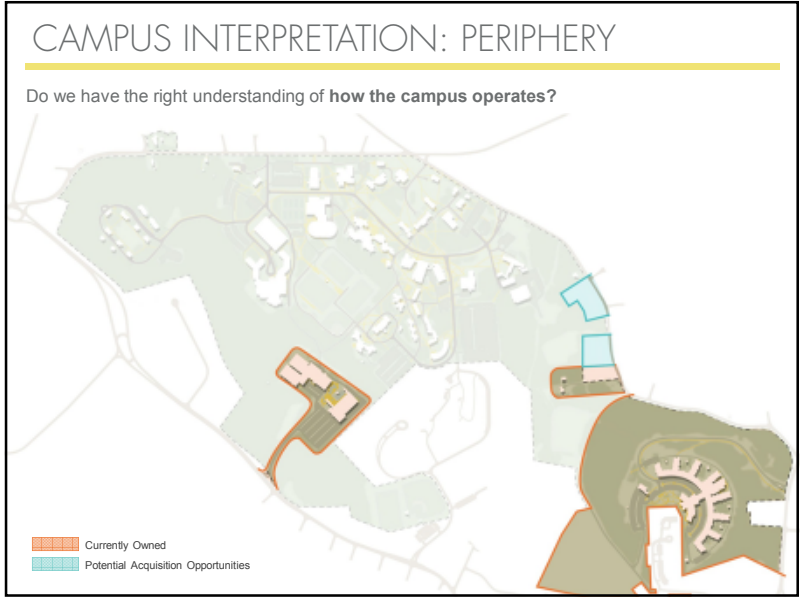
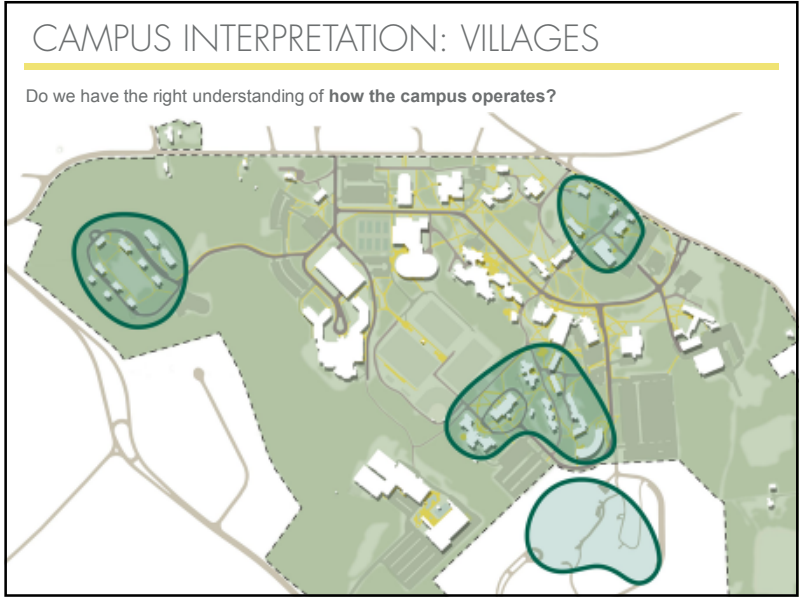
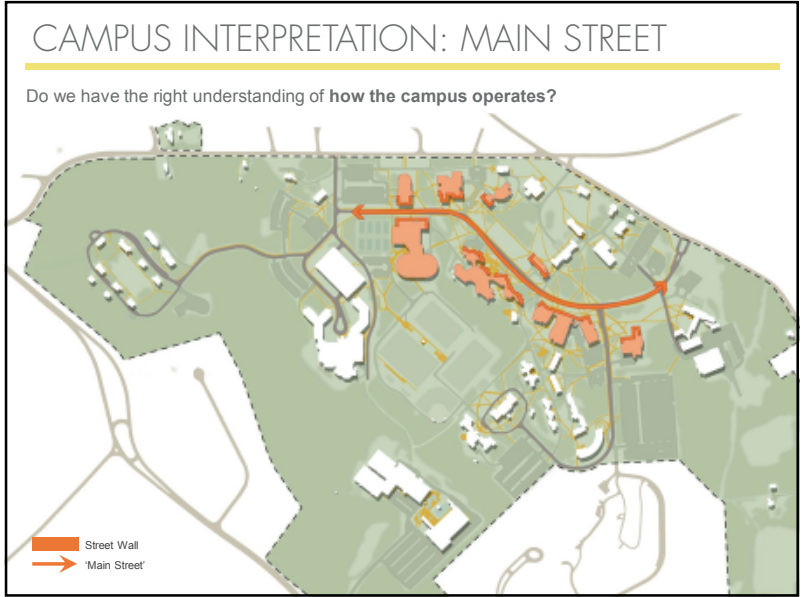
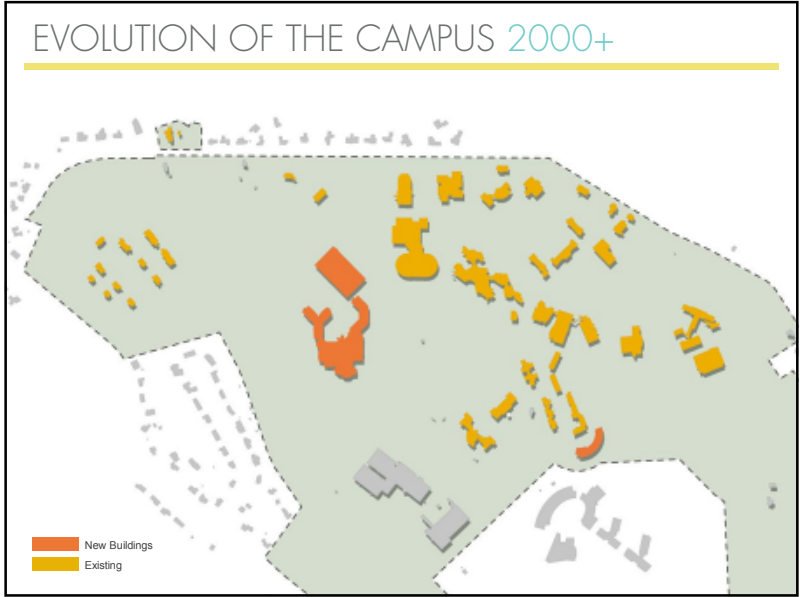
EVOLUTION OF THE CAMPUS 1978 – 1999

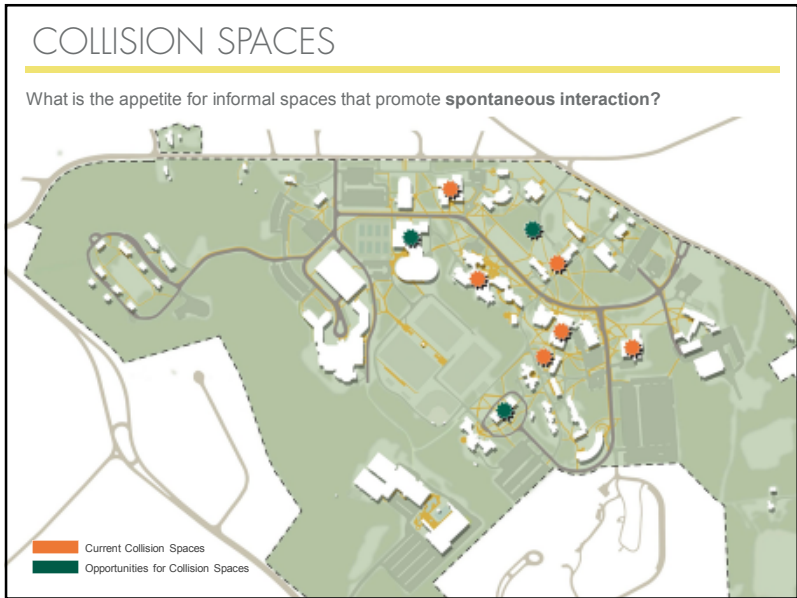
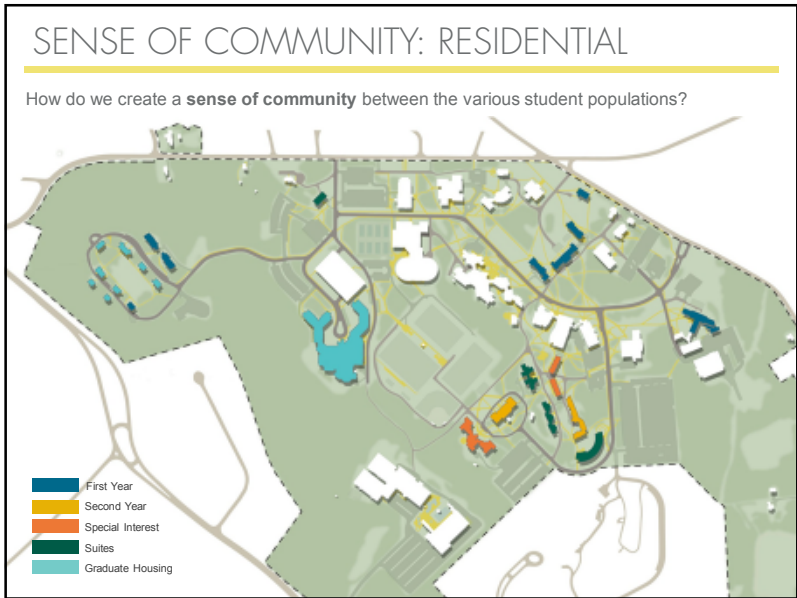
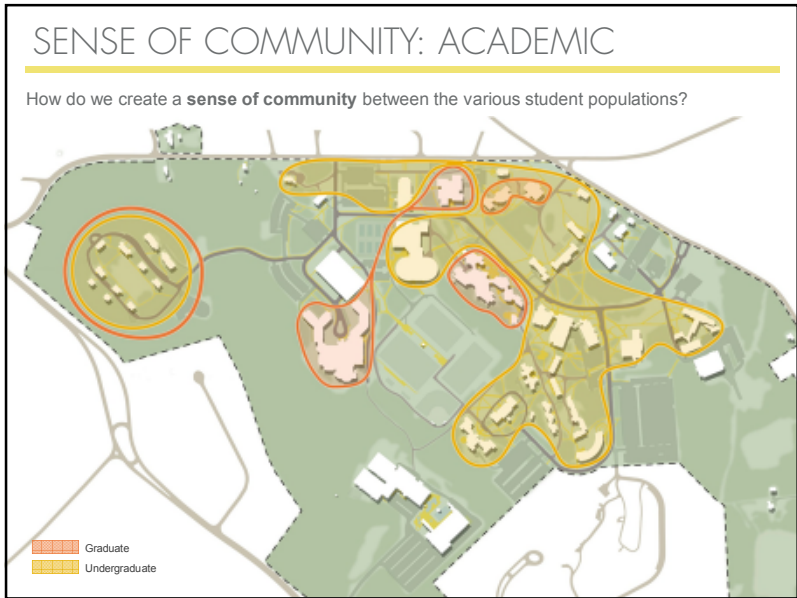
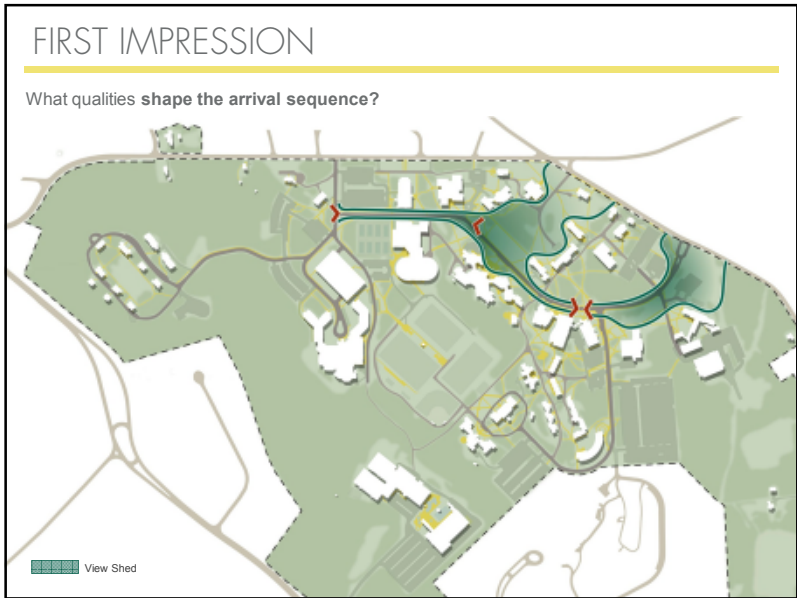
Residential Expansion

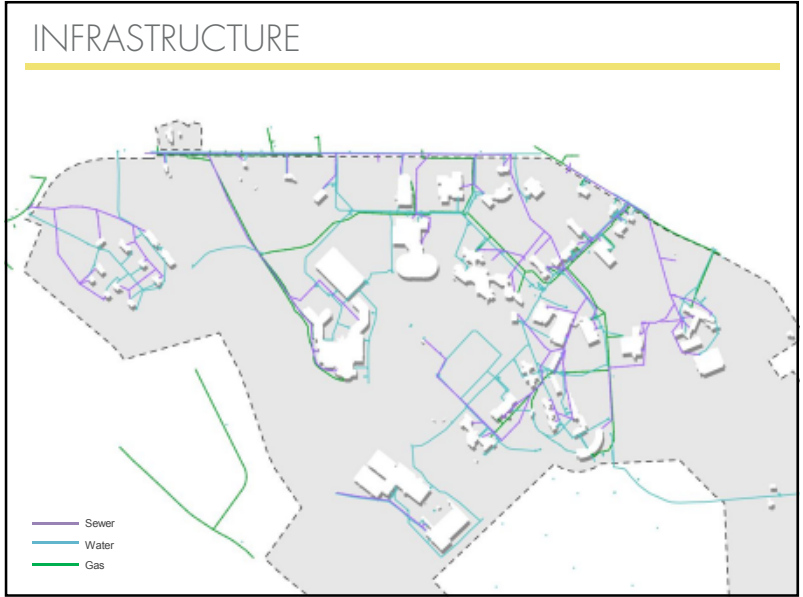
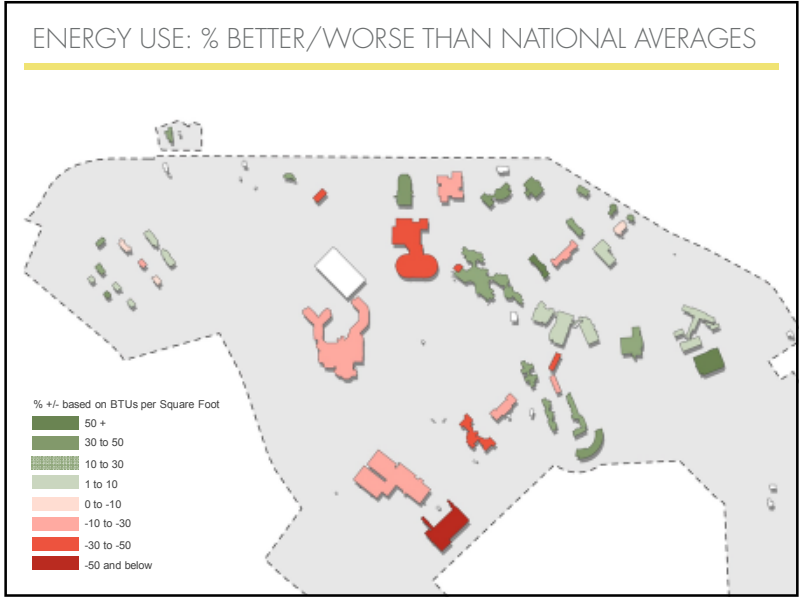
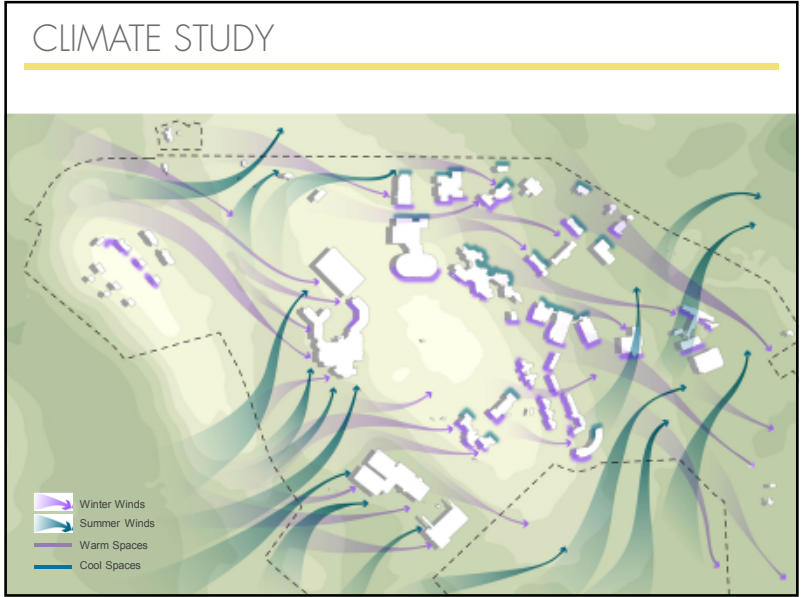
Educational Center

Athletics Expansion









CRITERIA WE HEARD

Connected campus

Flexible spaces

Spectrum of work spaces

Create 'neighborhoods'

'Fit U'

24 / 7 campus

'Living entrepreneurially'

Pedestrian priority in traditional vehicular zones

NEXT STEPS

NEXT STEPS

Faculty and Staff Meetings

July ACCP Meeting

- Space Needs Assessment and Master Plan Program
- Work Space Assessment
- Reuse and Regeneration
 - Academic
 - Residential
 - Library / Learning Commons
 - Athletic and Recreation Facilities
- MyCampus Survey Responses