

AHEC Master Plan Update

Work Session #4-
Development Plan & Implementation Strategy
13 March 2007



S A S A K I

Design Principles

- **Expand and intensify the campus** to meet the current and future space needs of CCD, MSCD, and UCDHSC in a way that is consistent with the physical quality and character of the Auraria campus
- **Enhance the identity** of the individual institutions without undermining the shared identity of the Auraria Campus
- Enhance and develop pedestrian connections to ensure **accessibility for all**
- Support the educational objectives of the three institutions by creating **new opportunities for learning** both in buildings and outdoors
- Create **strong physical and programmatic connections off-campus**; to transit and the park systems and to Downtown Denver
- Develop a plan that **features components of sustainable design**, consistent with the City of Denver's Greenprint Denver Plan



Campus Framework - Today

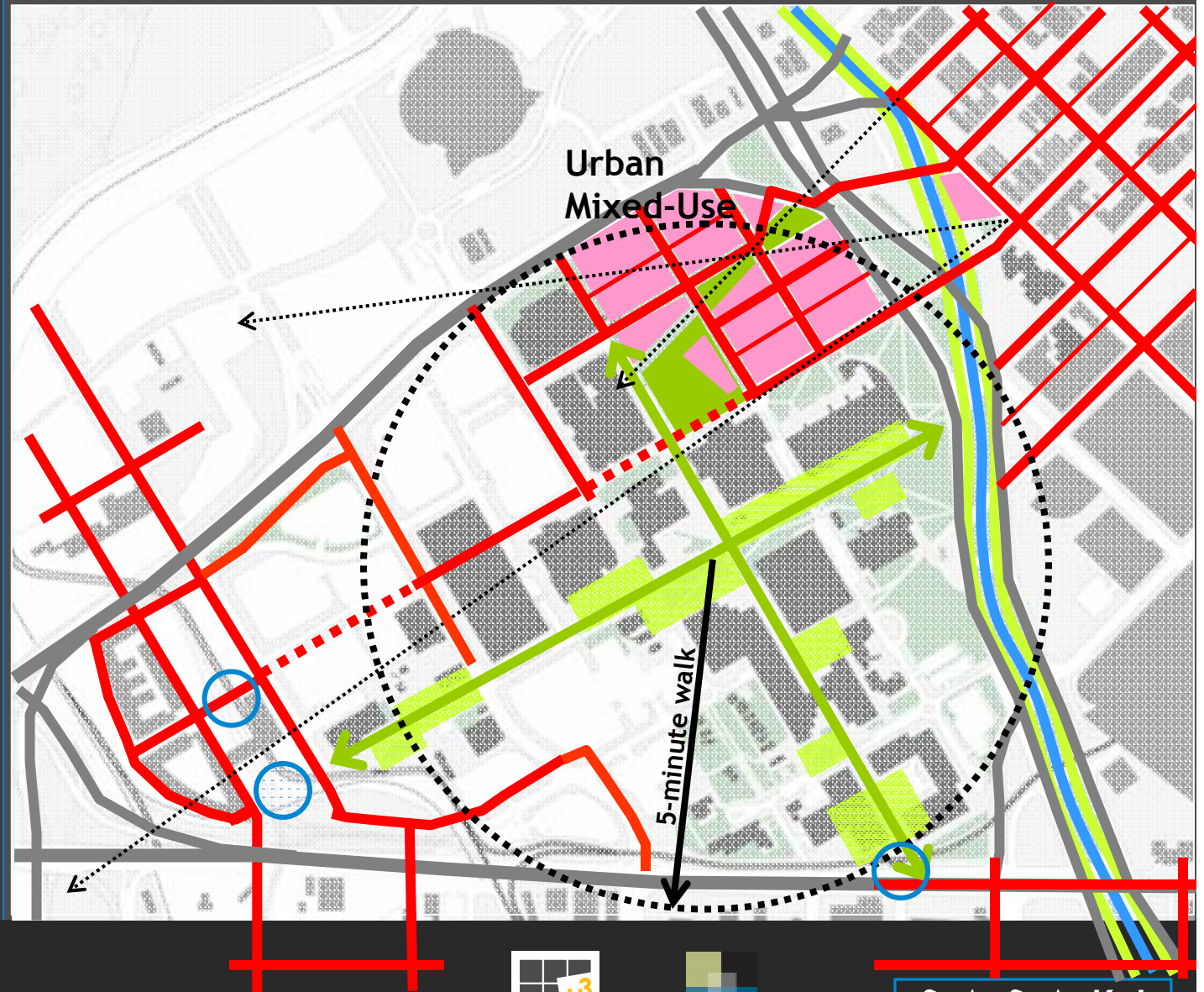


13 March 2007



S A S A K I

Campus Framework - Proposed

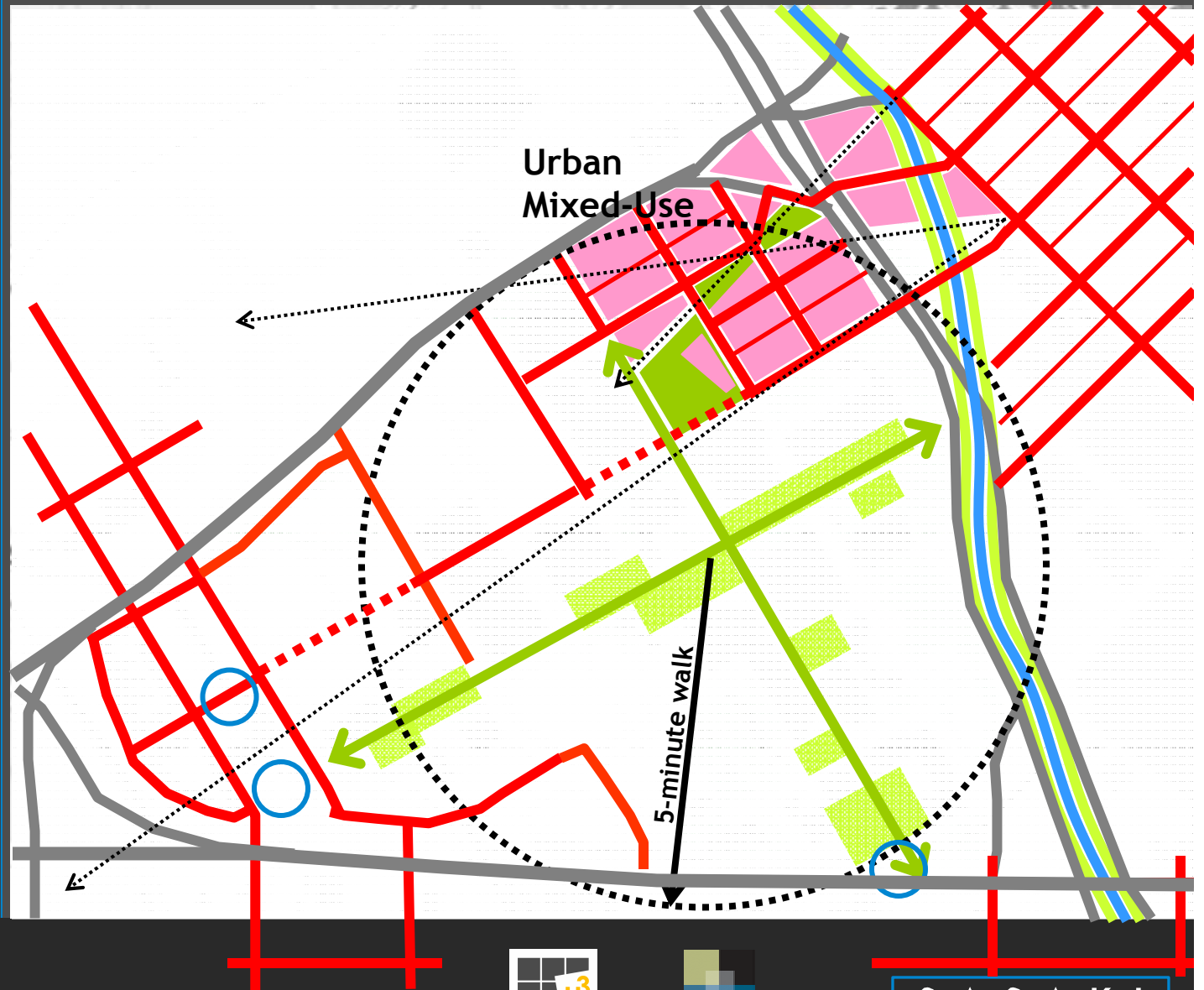


13 March 2007



S A S A K I

Campus Framework - Proposed

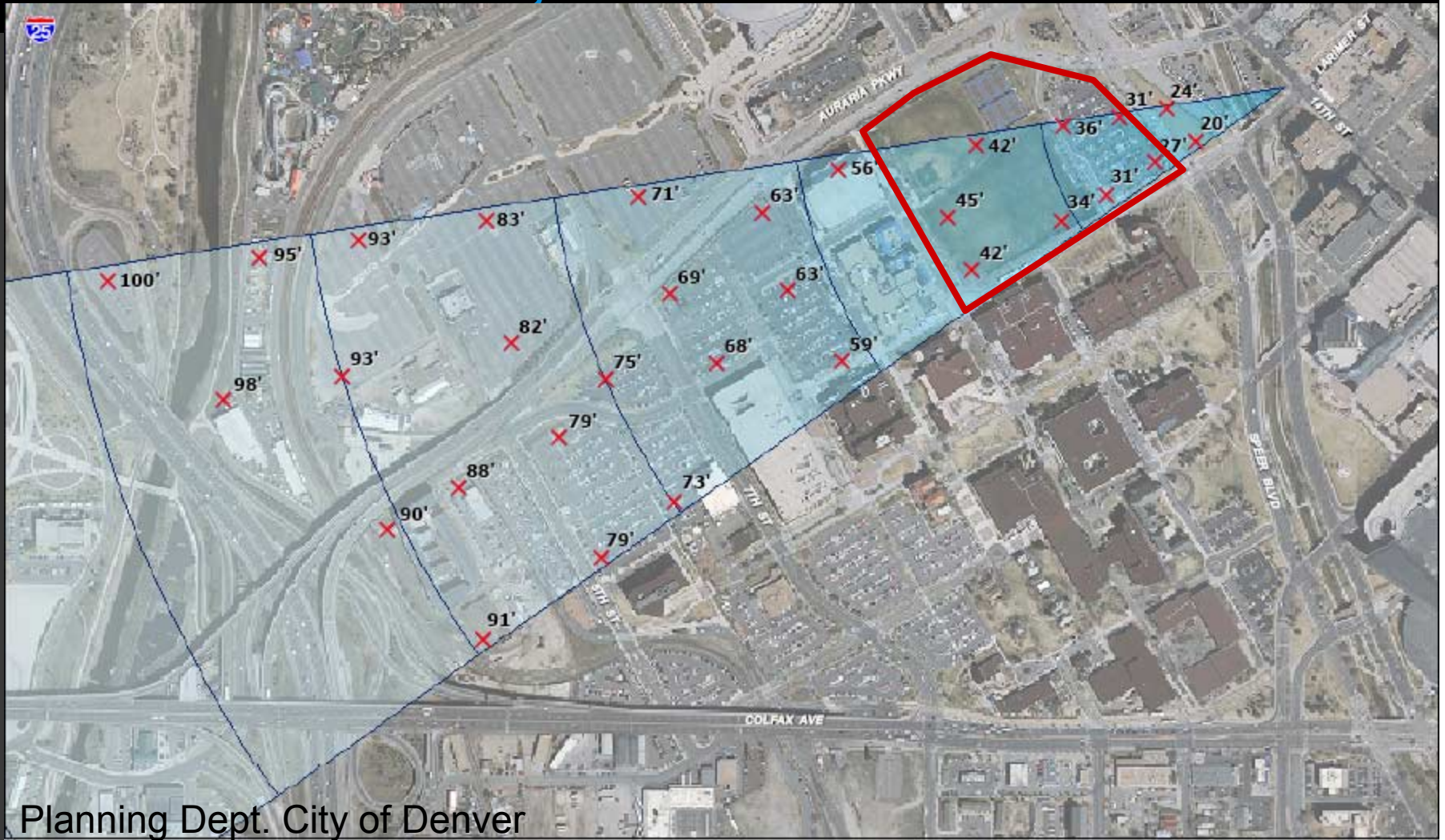


13 March 2007

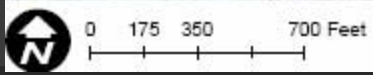


S A S A K I

Old City Hall View shed



Planning Dept. City of Denver



Old City Hall View Plane

X Allowable Height at Point
= 5215' - elevation at point
+ 1' per 80' from origin

Aerial Photo: 4/06
Map Date: 2/14/07



Downtown Extension-Bridging Speer Blvd



13 March 2007



S A S A K I

LoDo scale and character



13 March 2007



S A S A K I

Urban District



13 March 2007



S A S A K I

- 1,25-1,5 million gsf at 4-6 levels

Development potential



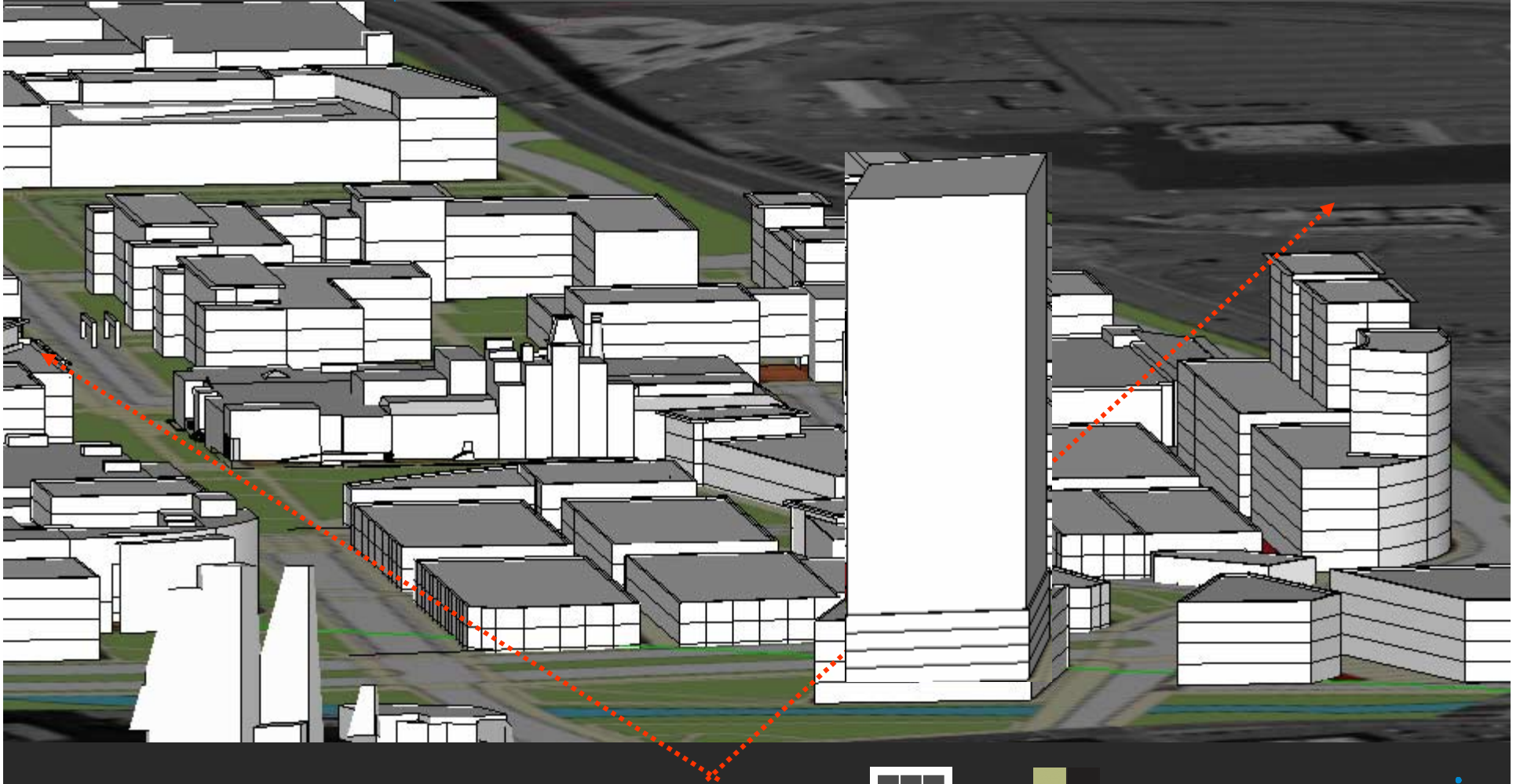
13 March 2007



S A S A K I

Development potential

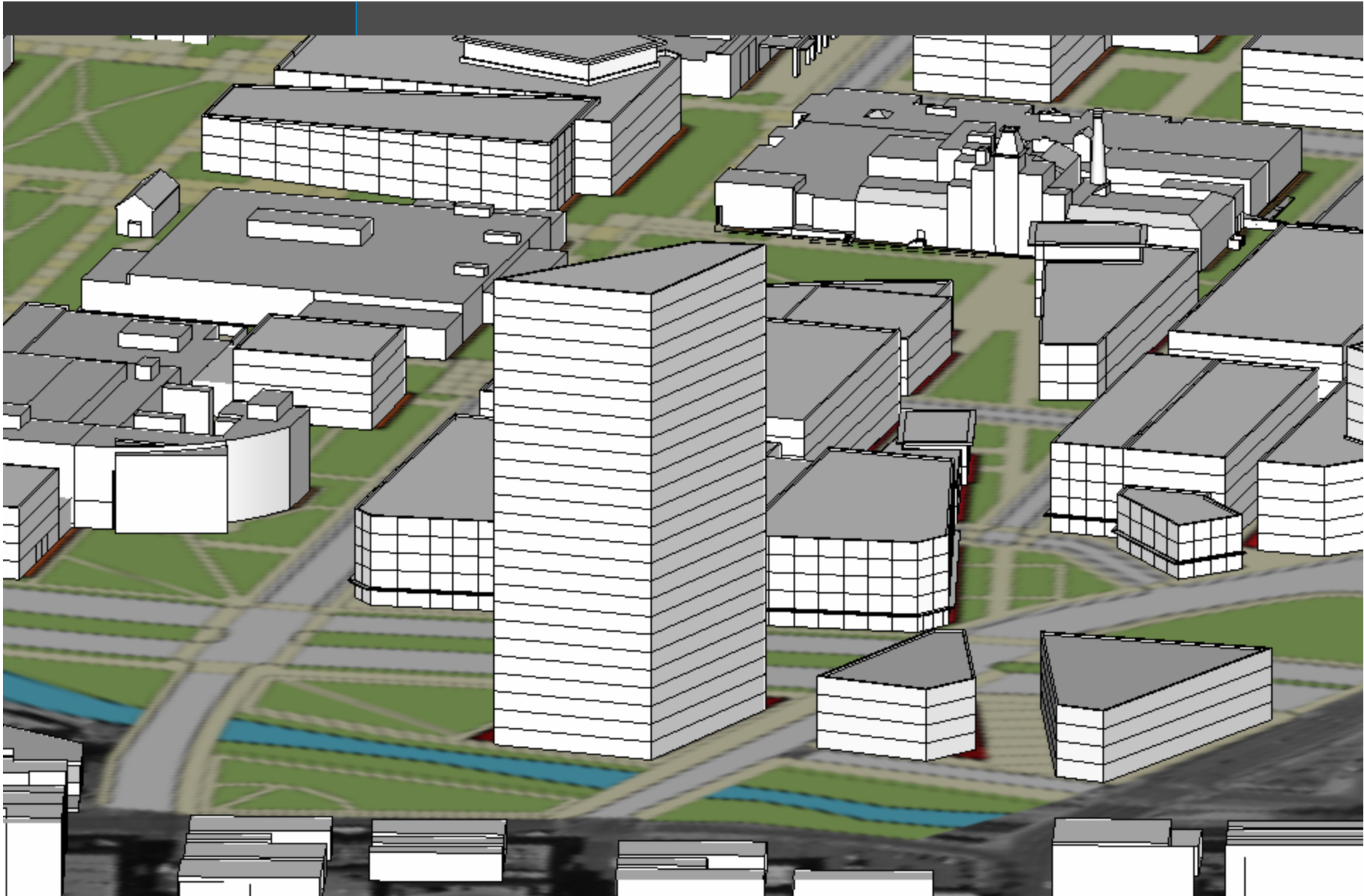
- 600-700,000 gsf at 2-3 levels



13 March 2007



S A S A K I

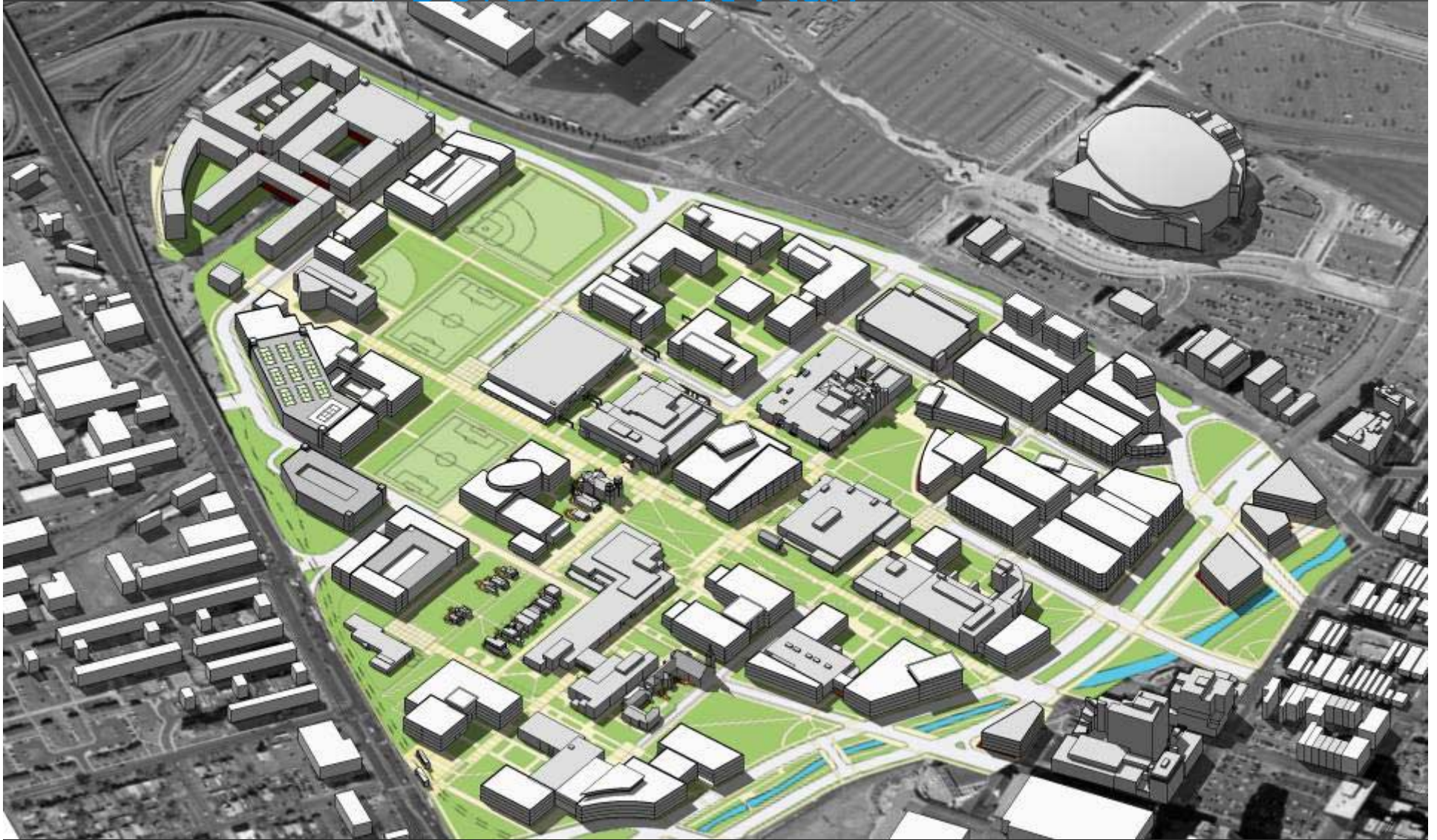


13 March 2007



S A S A K I

Development Plan



13 March 2007



S A S A K I

Campus/Urban Fabric



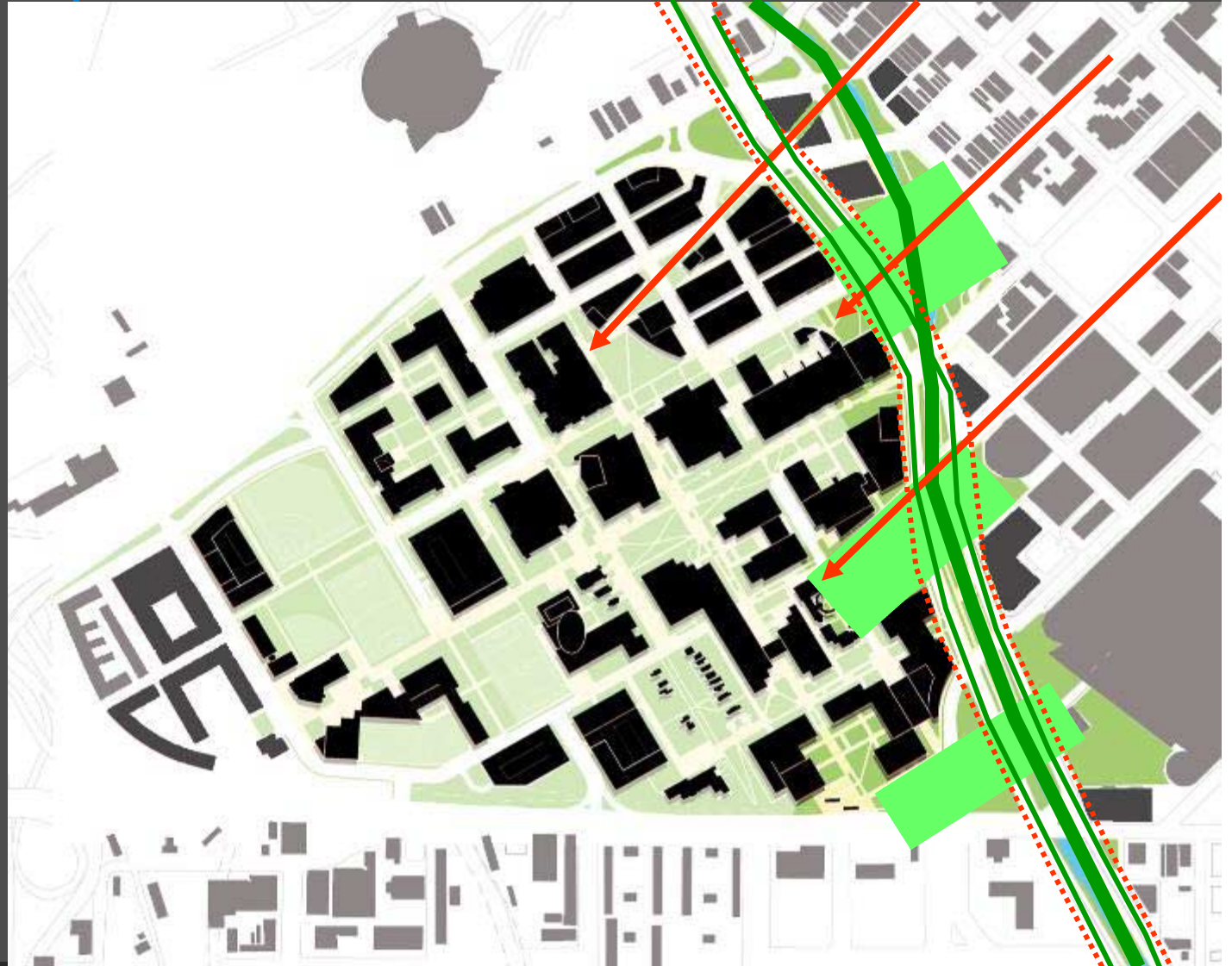
13 March 2007



S A S A K I

Speer Boulevard

- Landscape setback of 32-40'
- Improvements to pedestrian paths and crossings
- Parks at significant crossings create "civic rooms"
- View corridors



13 March 2007



S A S A K I

Campus crossroads



13 March 2007



S A S A K I

Campus setting and play fields



13 March 2007



S A S A K I

Library



13 March 2007



S A S A K I

Science buildings



13 March 2007



S A S A K I



13 March 2007





13 March 2007



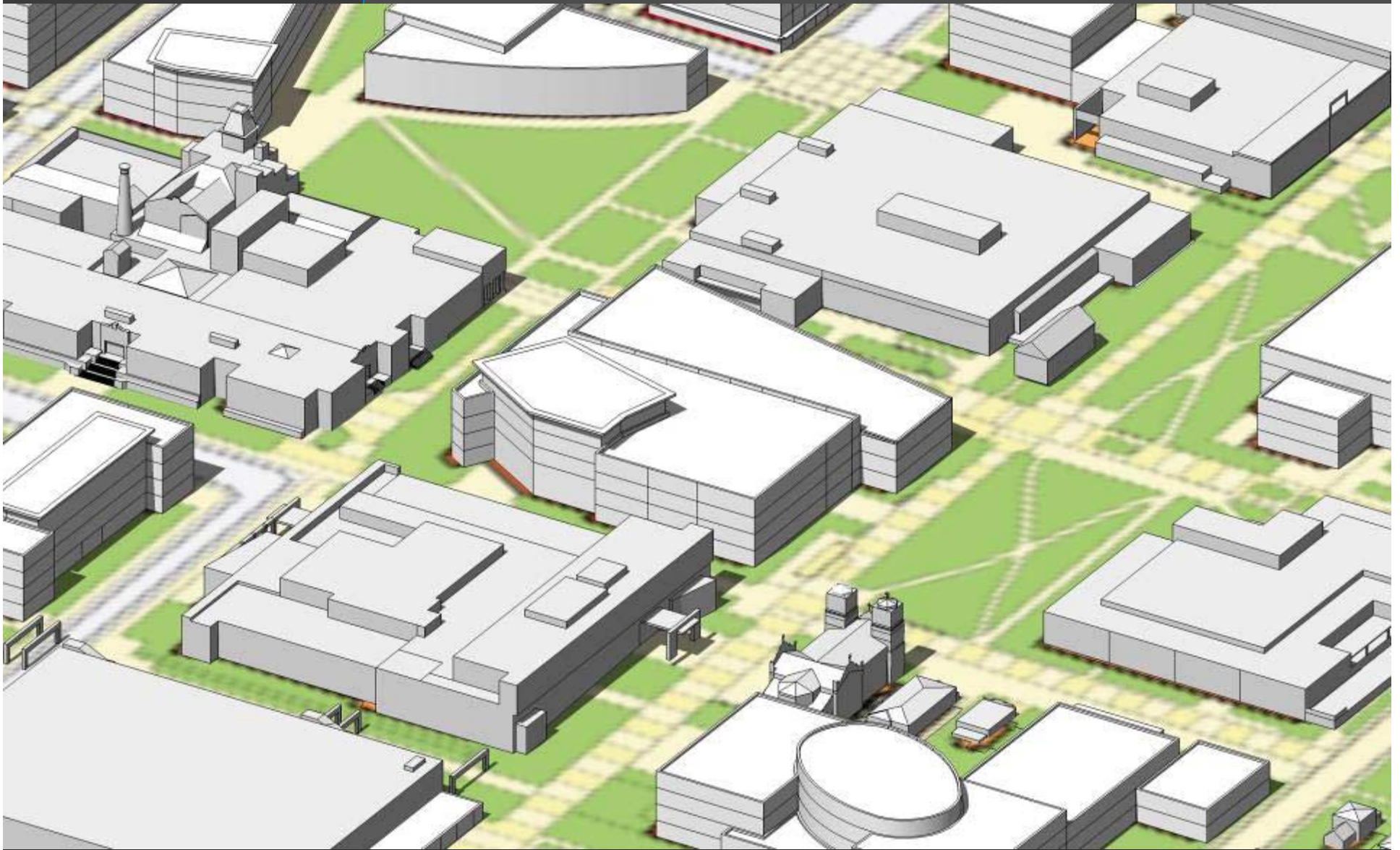
S A S A K I



13 March 2007



S A S A K I



13 March 2007



S A S A K I



13 March 2007



S A S A K I



13 March 2007



S A S A K I



13 March 2007



S A S A K I



13 March 2007



S A S A K I



13 March 2007



S A S A K I

Sustainability

- Building orientation
- Pedestrian links to transit
- Parking management
- Bicycles and Pedestrians

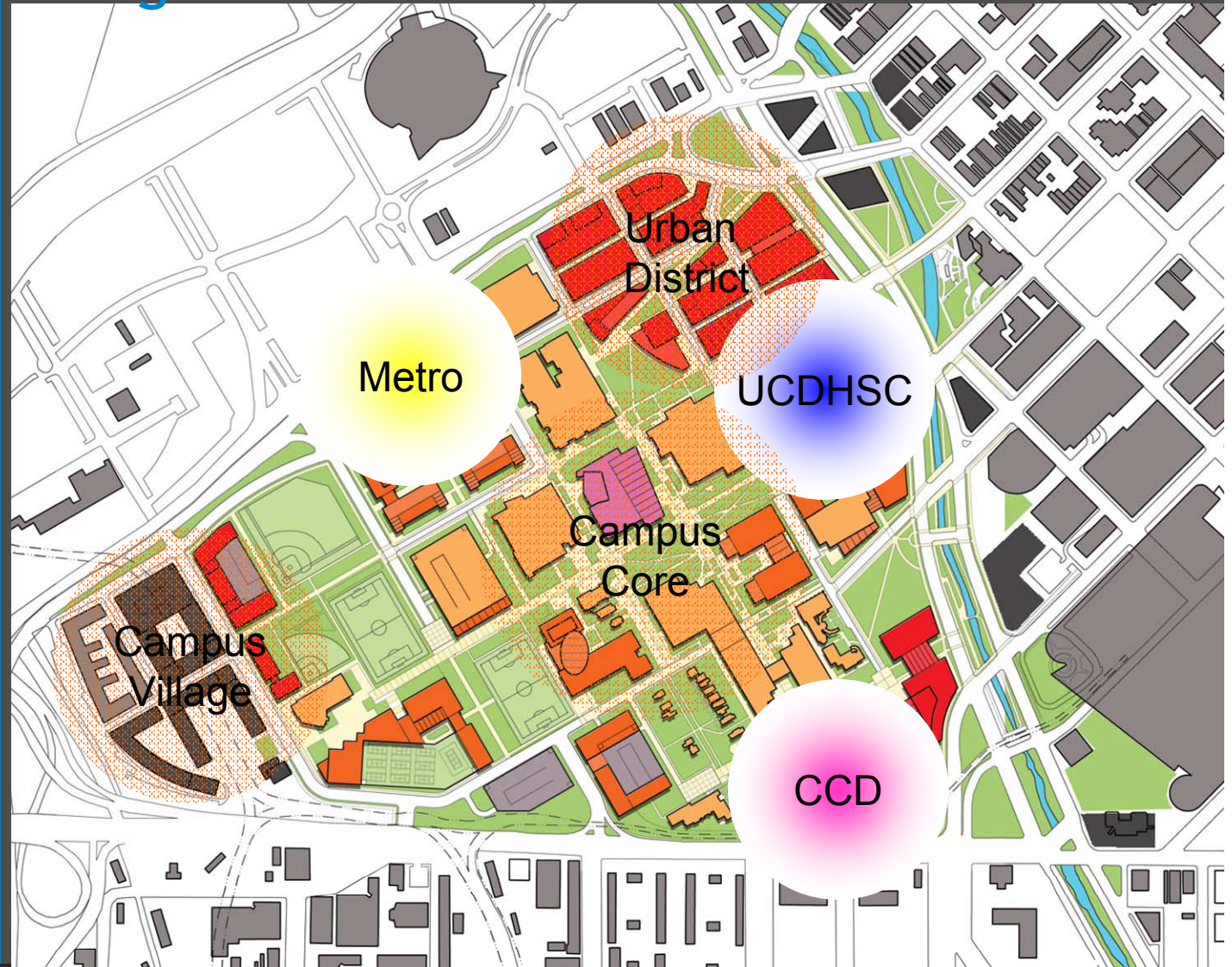


13 March 2007



S A S A K I

Neighborhoods

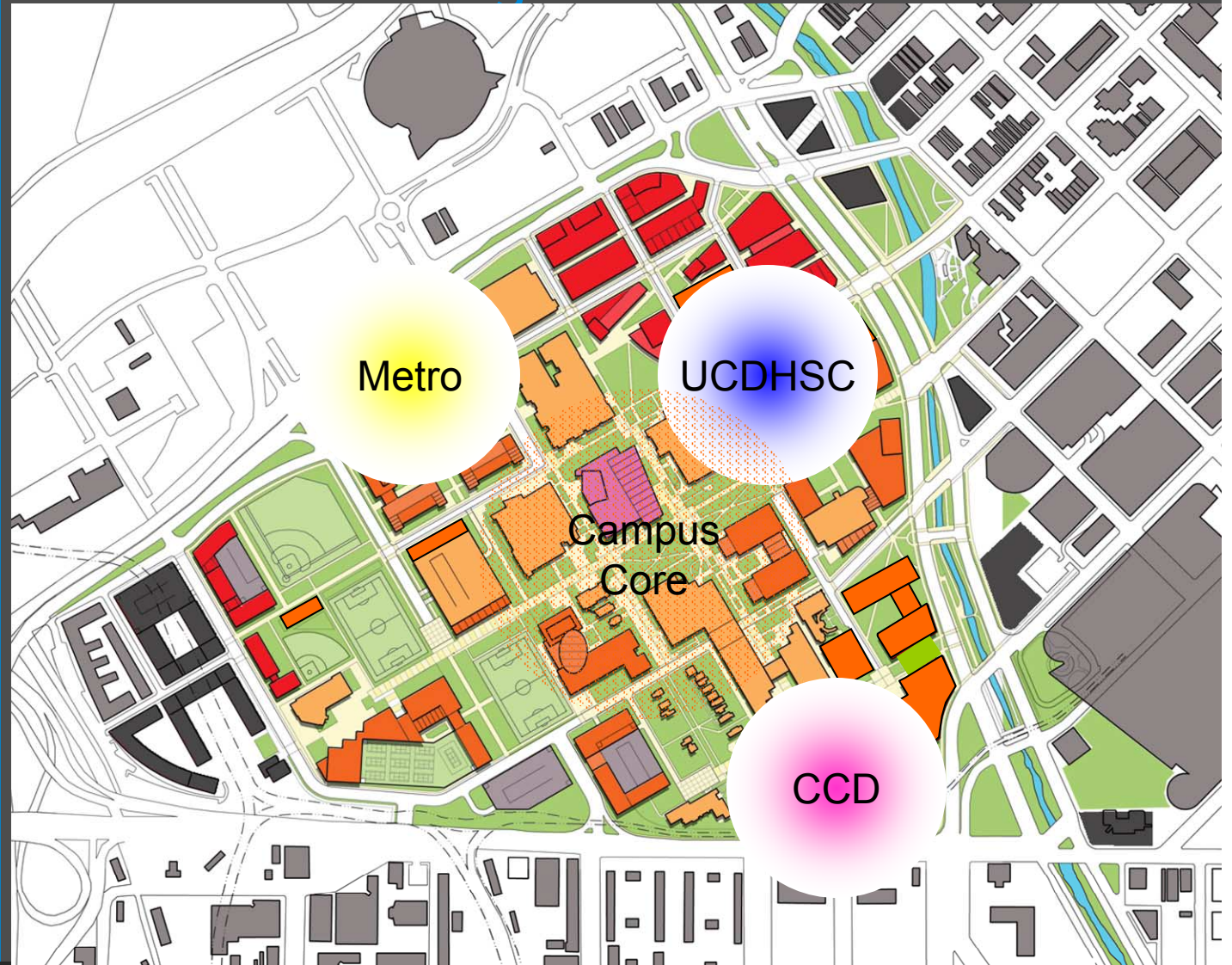


13 March 2007



S A S A K I

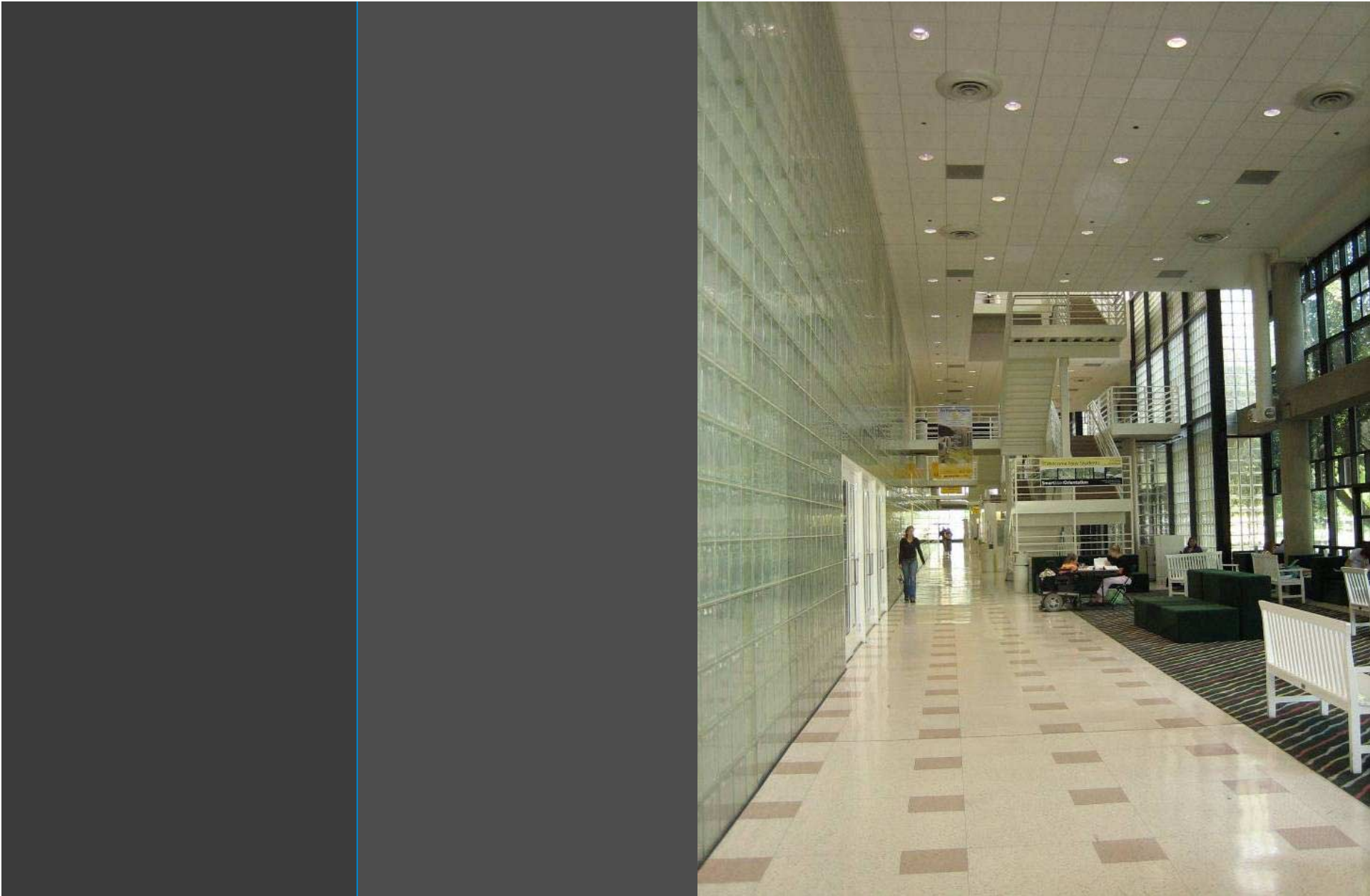
Draft Plan Changes



13 March 2007



S A S A K I



13 March 2007



S A S A K I















Ninth Street Park

Historic Preservation Commission
1000 North 10th Street
Columbus, Ohio 43212
614.462.1234
www.columbusohio.gov
Historic Preservation Commission
1000 North 10th Street
Columbus, Ohio 43212
614.462.1234
www.columbusohio.gov





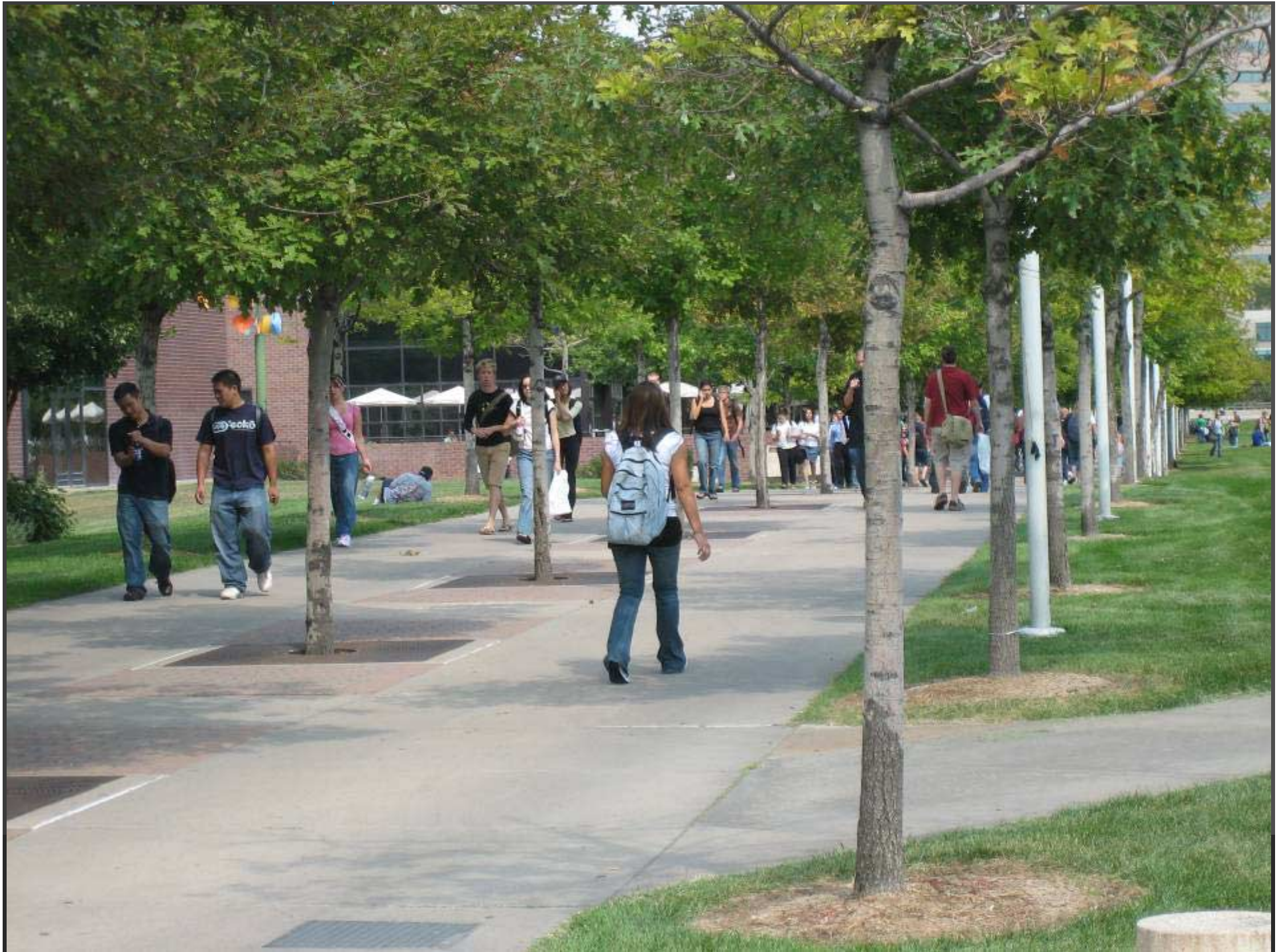
13 March 2007



S A S A K I



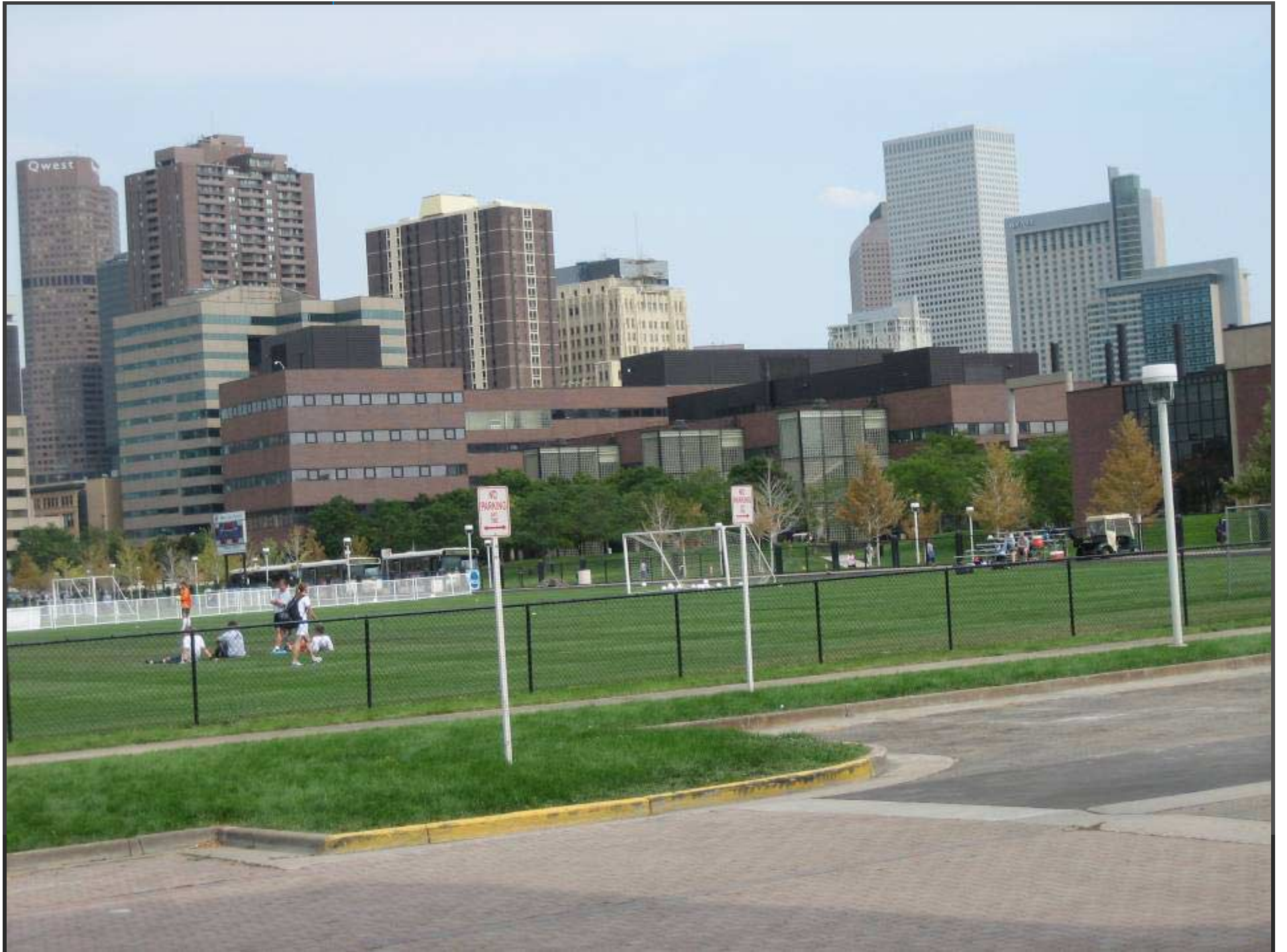




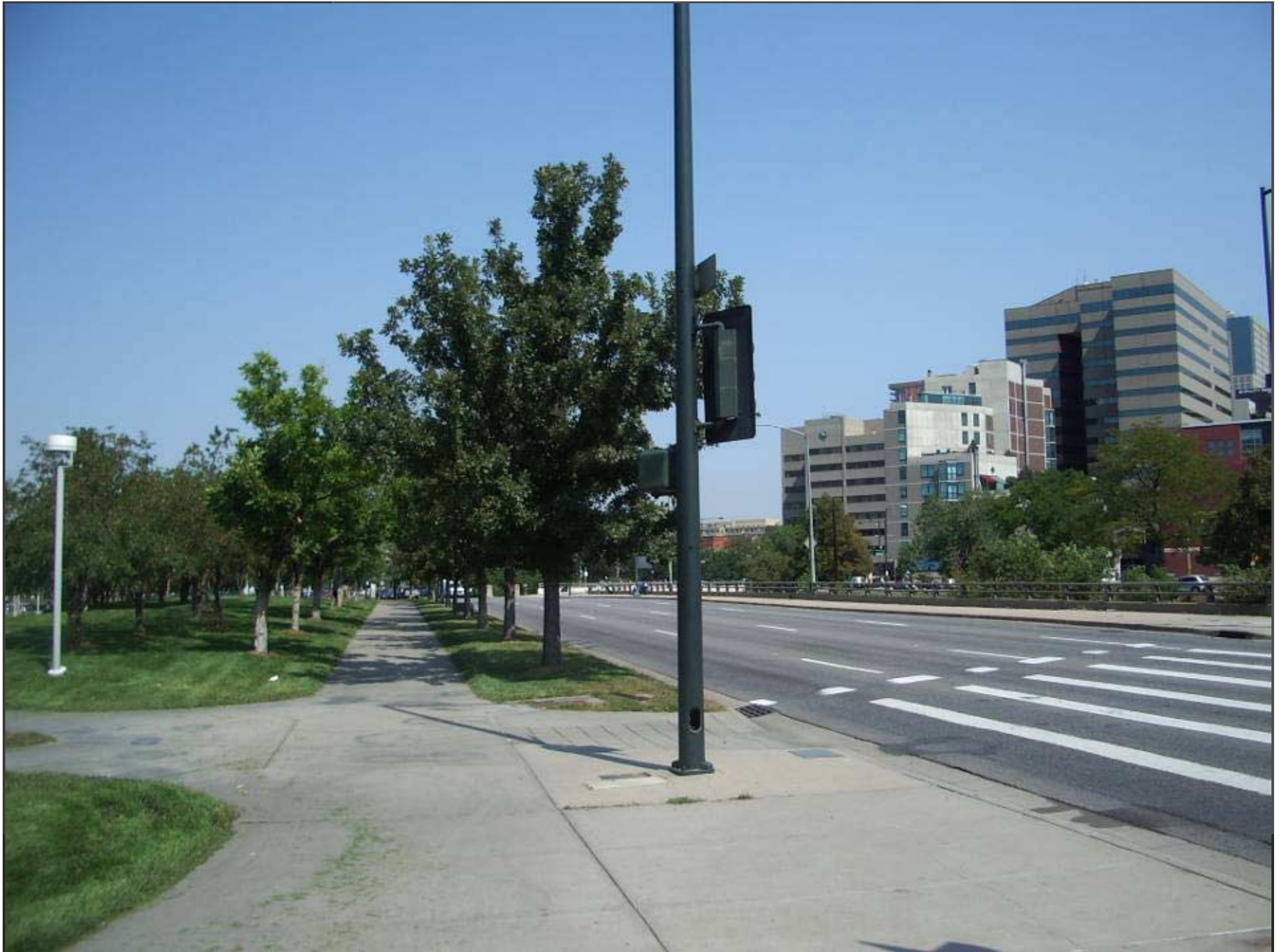
















13 March 2007

S A S A K I



13 March 2007

S A S A K I















South Classroom



13 March 2007

S A S A K I



D
30th • Downing 18th • California

206
30TH & DOWNING

COLE PALMARIANA RD





TRAIN ONLY
DO NOT ENTER

















13 March 2007

S A S A K I







West Classroom





13 March 2007

S A S A K I















13 March 2007

S A S A K I













13 March 2007

S A S A K I



13 March 2007

S A S A K I

















13 March 2007

SASAKI





13 March 2007

S A S A K I





































13 March 2007

S A S A K I







13 March 2007

S A S A K I











WELCOME TO
THE AURARIA
CAMPUS



Pedestrian Mall
Authorized
Vehicles Only



Unauthorized Vehicles Prohibited
This Area is Reserved for Pedestrians
and Bicycles. No Motor Vehicles
Allowed. See Map for
Location of this Sign.







